

Anti-MRPL3 Antibody

Rabbit polyclonal antibody to MRPL3

Catalog # AP59808

Product Information

Application	WB
Primary Accession	P09001
Reactivity	Human, Monkey
Host	Rabbit
Clonality	Polyclonal
Calculated MW	38633

Additional Information

Gene ID	11222
Other Names	MRL3; RPML3; 39S ribosomal protein L3 mitochondrial; L3mt; MRP-L3
Target/Specificity	KLH-conjugated synthetic peptide encompassing a sequence within the center region of human MRPL3. The exact sequence is proprietary.
Dilution	WB~~WB (1/500 - 1/1000)
Format	Liquid in 0.42% Potassium phosphate, 0.87% Sodium chloride, pH 7.3, 30% glycerol, and 0.09% (W/V) sodium azide.
Storage	Store at -20 °C.Stable for 12 months from date of receipt

Protein Information

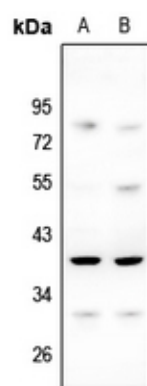
Name	MRPL3
Synonyms	MRL3, RPML3
Cellular Location	Mitochondrion

Background

KLH-conjugated synthetic peptide encompassing a sequence within the center region of human MRPL3. The exact sequence is proprietary.

Images

Western blot analysis of MRPL3 expression in A2780 (A),



HepG2 (B) whole cell lysates.

Please note: All products are 'FOR RESEARCH USE ONLY. NOT FOR USE IN DIAGNOSTIC OR THERAPEUTIC PROCEDURES'.