

Anti-RASSF8 Antibody

Rabbit polyclonal antibody to RASSF8

Catalog # AP59809

Product Information

Application	WB
Primary Accession	Q8NHQ8
Reactivity	Human, Mouse, Rat, Monkey
Host	Rabbit
Clonality	Polyclonal
Calculated MW	48327

Additional Information

Gene ID	11228
Other Names	C12orf2; Ras association domain-containing protein 8; Carcinoma-associated protein HOJ-1
Target/Specificity	KLH-conjugated synthetic peptide encompassing a sequence within the center region of human RASSF8. The exact sequence is proprietary.
Dilution	WB~~WB (1/500 - 1/1000)
Format	Liquid in 0.42% Potassium phosphate, 0.87% Sodium chloride, pH 7.3, 30% glycerol, and 0.09% (W/V) sodium azide.
Storage	Store at -20 °C.Stable for 12 months from date of receipt

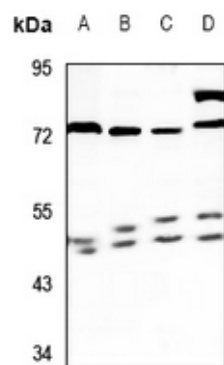
Protein Information

Name	RASSF8
Synonyms	C12orf2
Tissue Location	Widely expressed as a 6.2 kb transcript. A 2.2 kb alternatively spliced transcript is expressed exclusively in testis

Background

KLH-conjugated synthetic peptide encompassing a sequence within the center region of human RASSF8. The exact sequence is proprietary.

Images



Western blot analysis of RASSF8 expression in rat testis (A), mouse testis (B), HeLa (C), LO2 (D) whole cell lysates.

Please note: All products are 'FOR RESEARCH USE ONLY. NOT FOR USE IN DIAGNOSTIC OR THERAPEUTIC PROCEDURES'.