

# Anti-FASTKD2 Antibody

Rabbit polyclonal antibody to FASTKD2

Catalog # AP59811

## Product Information

Application	WB, IP
Primary Accession	<a href="#">Q9NYY8</a>
Other Accession	<a href="#">Q922E6</a>
Reactivity	Human, Mouse, Rat
Host	Rabbit
Clonality	Polyclonal
Calculated MW	81463

## Additional Information

Gene ID	22868
Other Names	KIAA0971; FAST kinase domain-containing protein 2
Target/Specificity	Recognizes endogenous levels of FASTKD2 protein.
Dilution	WB~~WB (1/500 - 1/1000), IP (1/10 - 1/100) IP~~N/A
Format	Liquid in 0.42% Potassium phosphate, 0.87% Sodium chloride, pH 7.3, 30% glycerol, and 0.09% (W/V) sodium azide.
Storage	Store at -20 °C.Stable for 12 months from date of receipt

## Protein Information

Name	FASTKD2 {ECO:0000303 PubMed:27667664, ECO:0000312 HGNC:HGNC:29160}
Function	Plays an important role in assembly of the mitochondrial large ribosomal subunit (PubMed: <a href="#">25683715</a> ). As a component of a functional protein-RNA module, consisting of RCC1L, NGRN, RPUSD3, RPUSD4, TRUB2, FASTKD2 and 16S mitochondrial ribosomal RNA (16S mt- rRNA), controls 16S mt-rRNA abundance and is required for intra- mitochondrial translation (PubMed: <a href="#">25683715</a> , PubMed: <a href="#">26370583</a> , PubMed: <a href="#">27667664</a> ). May play a role in mitochondrial apoptosis.
Cellular Location	Mitochondrion matrix, mitochondrion nucleoid Mitochondrion matrix. Note=Localizes to mitochondrial RNA granules found in close proximity to the mitochondrial nucleoids.
Tissue Location	Expression detected in spleen, thymus, testis, ovary, colon, heart, smooth muscle, kidney, brain, lung, liver and white adipose tissue with highest

expression in heart, smooth muscle and thyroid.

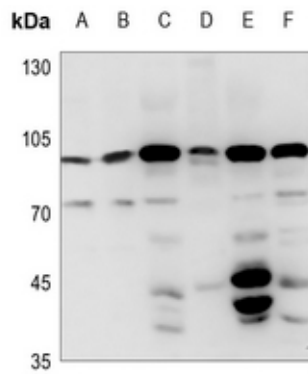
## Background

---

KLH-conjugated synthetic peptide encompassing a sequence within the center region of human FASTKD2. The exact sequence is proprietary.

## Images

---



Western blot analysis of FASTKD2 expression in H446 (A), A549 (B), mouse liver (C), mouse lung (D), rat liver (E), rat lung (F) whole cell lysates.

Please note: All products are 'FOR RESEARCH USE ONLY. NOT FOR USE IN DIAGNOSTIC OR THERAPEUTIC PROCEDURES'.