

Anti-FAIM2 Antibody

Rabbit polyclonal antibody to FAIM2

Catalog # AP59813

Product Information

Application	WB
Primary Accession	Q9BWQ8
Reactivity	Human, Mouse
Host	Rabbit
Clonality	Polyclonal
Calculated MW	35110

Additional Information

Gene ID	23017
Other Names	KIAA0950; LFG; LFG2; NMP35; TMBIM2; Protein lifeguard 2; Fas apoptotic inhibitory molecule 2; Neural membrane protein 35; Transmembrane BAX inhibitor motif-containing protein 2
Target/Specificity	Recognizes endogenous levels of FAIM2 protein.
Dilution	WB~~WB (1/500 - 1/1000)
Format	Liquid in 0.42% Potassium phosphate, 0.87% Sodium chloride, pH 7.3, 30% glycerol, and 0.09% (W/V) sodium azide.
Storage	Store at -20 °C.Stable for 12 months from date of receipt

Protein Information

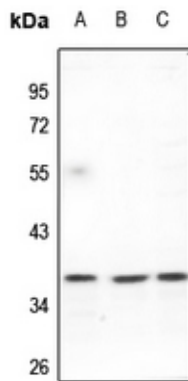
Name	FAIM2
Synonyms	KIAA0950, LFG, LFG2, NMP35, TMBIM2
Function	Antiapoptotic protein which protects cells uniquely from Fas- induced apoptosis. Regulates Fas-mediated apoptosis in neurons by interfering with caspase-8 activation. May play a role in cerebellar development by affecting cerebellar size, internal granular layer (IGL) thickness, and Purkinje cell (PC) development.
Cellular Location	Cell membrane; Multi-pass membrane protein. Membrane raft Postsynaptic cell membrane
Tissue Location	Highly expressed in breast carcinoma tissues. Enhanced expression correlates with the grade of the tumor (grade II/grade III) in primary breast tumors (at protein level). Widely expressed. Expressed at high levels in the brain

especially in the hippocampus.

Background

KLH-conjugated synthetic peptide encompassing a sequence within the N-term region of human FAIM2. The exact sequence is proprietary.

Images



Western blot analysis of FAIM2 expression in BV2 (A), U87MG (B), HEK293T (C) whole cell lysates.

Please note: All products are 'FOR RESEARCH USE ONLY. NOT FOR USE IN DIAGNOSTIC OR THERAPEUTIC PROCEDURES'.