

Anti-CLCC1 Antibody

Rabbit polyclonal antibody to CLCC1

Catalog # AP59815

Product Information

Application	WB
Primary Accession	Q96S66
Reactivity	Human
Host	Rabbit
Clonality	Polyclonal
Calculated MW	62023

Additional Information

Gene ID	23155
Other Names	KIAA0761; MCLC; Chloride channel CLIC-like protein 1; Mid-1-related chloride channel protein 1
Target/Specificity	Recognizes endogenous levels of CLCC1 protein.
Dilution	WB~~WB (1/500 - 1/1000)
Format	Liquid in 0.42% Potassium phosphate, 0.87% Sodium chloride, pH 7.3, 30% glycerol, and 0.09% (W/V) sodium azide.
Storage	Store at -20 °C.Stable for 12 months from date of receipt

Protein Information

Name	CLCC1 {ECO:0000303 PubMed:37142673, ECO:0000312 HGNC:HGNC:29675}
Function	Anion-selective channel with Ca(2+)-dependent and voltage- independent gating. Permeable to small monovalent anions with selectivity for bromide > chloride > nitrate > fluoride (By similarity). Operates in the endoplasmic reticulum (ER) membrane where it mediates chloride efflux to compensate for the loss of positive charges from the ER lumen upon Ca(2+) release. Contributes to the maintenance of ER Ca(2+) pools and activation of unfolded protein response to prevent accumulation of misfolded proteins in the ER lumen. Particularly involved in ER homeostasis mechanisms underlying motor neurons and retinal photoreceptors survival (By similarity) (PubMed: 25698737 , PubMed: 30157172 , PubMed: 37142673).
Cellular Location	Endoplasmic reticulum membrane; Multi-pass membrane protein. Note=Within the endoplasmic reticulum (ER), localizes to the mitochondria-associated ER membrane, a zone of contact between the ER and

mitochondrial membranes. Enriched in the rough ER.
{ECO:0000250|UniProtKB:Q99LI2, ECO:0000269|PubMed:31653868}

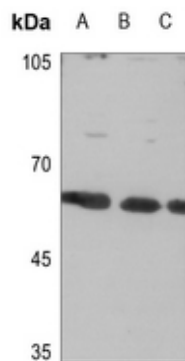
Tissue Location

Expressed in the retina of the eye, with extensive expression in the lamina cribrosa, optic nerve, ganglion cell layer, inner nuclear layer, outer nuclear layer and retinal pigment epithelium.

Background

KLH-conjugated synthetic peptide encompassing a sequence within the center region of human CLCC1. The exact sequence is proprietary.

Images



Western blot analysis of CLCC1 expression in HEK293T (A), HeLa (B), H446 (C) whole cell lysates.

Please note: All products are 'FOR RESEARCH USE ONLY. NOT FOR USE IN DIAGNOSTIC OR THERAPEUTIC PROCEDURES'.