

Anti-SAP130 Antibody

Rabbit polyclonal antibody to SAP130

Catalog # AP59818

Product Information

Application	WB
Primary Accession	Q15393
Other Accession	Q921M3
Reactivity	Human, Mouse, Rat, Zebrafish, Bovine
Host	Rabbit
Clonality	Polyclonal
Calculated MW	135577

Additional Information

Gene ID	23450
Other Names	KIAA0017; SAP130; Splicing factor 3B subunit 3; Pre-mRNA-splicing factor SF3b 130 kDa subunit; SF3b130; STAF130; Spliceosome-associated protein 130; SAP 130
Target/Specificity	KLH-conjugated synthetic peptide encompassing a sequence within the center region of human SAP130. The exact sequence is proprietary.
Dilution	WB~~WB (1/500 - 1/1000)
Format	Liquid in 0.42% Potassium phosphate, 0.87% Sodium chloride, pH 7.3, 30% glycerol, and 0.09% (W/V) sodium azide.
Storage	Store at -20 °C.Stable for 12 months from date of receipt

Protein Information

Name	SF3B3
Synonyms	KIAA0017, SAP130 {ECO:0000303 PubMed:104
Function	Component of the 17S U2 SnRNP complex of the spliceosome, a large ribonucleoprotein complex that removes introns from transcribed pre-mRNAs (PubMed: 10490618 , PubMed: 10882114 , PubMed: 12234937 , PubMed: 27720643 , PubMed: 28781166 , PubMed: 32494006 , PubMed: 34822310). The 17S U2 SnRNP complex (1) directly participates in early spliceosome assembly and (2) mediates recognition of the intron branch site during pre-mRNA splicing by promoting the selection of the pre-mRNA branch- site adenosine, the nucleophile for the first step of splicing (PubMed: 12234937 , PubMed: 32494006 , PubMed: 34822310). Within the 17S U2 SnRNP complex, SF3B3 is part of the SF3B subcomplex, which is required

for 'A' complex assembly formed by the stable binding of U2 snRNP to the branchpoint sequence in pre-mRNA (PubMed:[12234937](#), PubMed:[27720643](#)). Sequence independent binding of SF3A and SF3B subcomplexes upstream of the branch site is essential, it may anchor U2 snRNP to the pre-mRNA (PubMed:[12234937](#)). May also be involved in the assembly of the 'E' complex (PubMed:[10882114](#)). Also acts as a component of the minor spliceosome, which is involved in the splicing of U12-type introns in pre-mRNAs (PubMed:[15146077](#), PubMed:[33509932](#)).

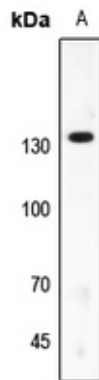
Cellular Location

Nucleus

Background

KLH-conjugated synthetic peptide encompassing a sequence within the center region of human SAP130. The exact sequence is proprietary.

Images



Western blot analysis of SAP130 expression in zebrafish (A) whole cell lysates.

Please note: All products are 'FOR RESEARCH USE ONLY. NOT FOR USE IN DIAGNOSTIC OR THERAPEUTIC PROCEDURES'.