

# Anti-Carbonic Anhydrase 14 Antibody

Rabbit polyclonal antibody to Carbonic Anhydrase 14

Catalog # AP59820

## Product Information

---

<b>Application</b>	WB, IP
<b>Primary Accession</b>	<a href="#">Q9ULX7</a>
<b>Reactivity</b>	Human, Mouse, Rat
<b>Host</b>	Rabbit
<b>Clonality</b>	Polyclonal
<b>Calculated MW</b>	37668

## Additional Information

---

<b>Gene ID</b>	23632
<b>Other Names</b>	Carbonic anhydrase 14; Carbonate dehydratase XIV; Carbonic anhydrase XIV; CA-XIV
<b>Target/Specificity</b>	Recognizes endogenous levels of Carbonic Anhydrase 14 protein.
<b>Dilution</b>	WB~~WB (1/500 - 1/1000), IP (1/10 - 1/100) IP~~N/A
<b>Format</b>	Liquid in 0.42% Potassium phosphate, 0.87% Sodium chloride, pH 7.3, 30% glycerol, and 0.09% (W/V) sodium azide.
<b>Storage</b>	Store at -20 °C.Stable for 12 months from date of receipt

## Protein Information

---

<b>Name</b>	CA14
<b>Function</b>	Reversible hydration of carbon dioxide.
<b>Cellular Location</b>	Membrane; Single-pass type I membrane protein
<b>Tissue Location</b>	High expression in all parts of the central nervous system and lower expression in adult liver, heart, small intestine, colon, kidney, urinary bladder and skeletal muscle

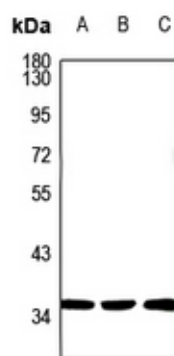
## Background

---

KLH-conjugated synthetic peptide encompassing a sequence within the center region of human Carbonic Anhydrase 14. The exact sequence is proprietary.

## Images

---



Western blot analysis of Carbonic Anhydrase 14 expression in CT26 (A), PC12 (B), MCF7 (C) whole cell lysates.

Please note: All products are 'FOR RESEARCH USE ONLY. NOT FOR USE IN DIAGNOSTIC OR THERAPEUTIC PROCEDURES'.