

# Anti-PI-TP beta Antibody

Rabbit polyclonal antibody to PI-TP beta  
Catalog # AP59822

## Product Information

Application	WB
Primary Accession	<a href="#">P48739</a>
Other Accession	<a href="#">P53811</a>
Reactivity	Human, Mouse, Rat
Host	Rabbit
Clonality	Polyclonal
Calculated MW	31540

## Additional Information

Gene ID	23760
Other Names	Phosphatidylinositol transfer protein beta isoform; PI-TP-beta; PtdIns transfer protein beta; PtdInsTP beta
Target/Specificity	KLH-conjugated synthetic peptide encompassing a sequence within the center region of human PI-TP beta. The exact sequence is proprietary.
Dilution	WB~~WB (1/500 - 1/1000)
Format	Liquid in 0.42% Potassium phosphate, 0.87% Sodium chloride, pH 7.3, 30% glycerol, and 0.09% (W/V) sodium azide.
Storage	Store at -20 °C.Stable for 12 months from date of receipt

## Protein Information

Name	PITPNB
Function	Catalyzes the transfer of phosphatidylinositol and phosphatidylcholine between membranes (PubMed: <a href="#">10531358</a> , PubMed: <a href="#">18636990</a> , PubMed: <a href="#">20332109</a> ). Also catalyzes the transfer of sphingomyelin (By similarity). Required for COPI-mediated retrograde transport from the Golgi to the endoplasmic reticulum; phosphatidylinositol and phosphatidylcholine transfer activity is essential for this function (PubMed: <a href="#">20332109</a> ).
Cellular Location	Golgi apparatus {ECO:0000250 UniProtKB:P53811}. Golgi apparatus membrane {ECO:0000250 UniProtKB:P53812}. Endoplasmic reticulum membrane {ECO:0000250 UniProtKB:P53812}
Tissue Location	Widely expressed in various tissues including brain

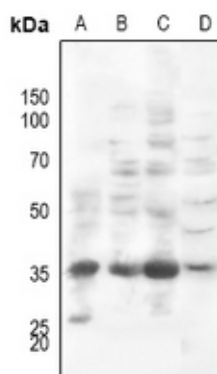
## Background

---

KLH-conjugated synthetic peptide encompassing a sequence within the center region of human PI-TP beta. The exact sequence is proprietary.

## Images

---



Western blot analysis of PI-TP beta expression in HEK293T (A), Hela (B), HepG2 (C), rat heart (D) whole cell lysates.

Please note: All products are 'FOR RESEARCH USE ONLY. NOT FOR USE IN DIAGNOSTIC OR THERAPEUTIC PROCEDURES'.