

Anti-KIF4A Antibody

Rabbit polyclonal antibody to KIF4A

Catalog # AP59823

Product Information

| | |
|--------------------------|------------------------|
| Application | WB, IF/IC |
| Primary Accession | O95239 |
| Reactivity | Human, Mouse, Monkey |
| Host | Rabbit |
| Clonality | Polyclonal |
| Calculated MW | 139881 |

Additional Information

| | |
|---------------------------|--------------------------------------------------------------------------------------------------------------------------------------|
| Gene ID | 24137 |
| Other Names | KIF4; Chromosome-associated kinesin KIF4A; Chromokinesin-A |
| Target/Specificity | KLH-conjugated synthetic peptide encompassing a sequence within the C-term region of human KIF4A. The exact sequence is proprietary. |
| Dilution | WB~~WB (1/500 - 1/1000), IF/IC (1/100 - 1/500) IF/IC~~N/A |
| Format | Liquid in 0.42% Potassium phosphate, 0.87% Sodium chloride, pH 7.3, 30% glycerol, and 0.09% (W/V) sodium azide. |
| Storage | Store at -20 °C.Stable for 12 months from date of receipt |

Protein Information

| | |
|--------------------------|-----------------------------------------------------------------------------------------------------------------------------------------------------------------------------------------------------------------------------------------------------------------------------------------------------------------------------------------------------------------------------------------------------------------------------------------------------------------------------------------------------------------------------------------------------------------------------|
| Name | KIF4A |
| Synonyms | KIF4 |
| Function | Iron-sulfur (Fe-S) cluster binding motor protein that has a role in chromosome segregation during mitosis (PubMed: 29848660). Translocates PRC1 to the plus ends of interdigitating spindle microtubules during the metaphase to anaphase transition, an essential step for the formation of an organized central spindle midzone and midbody and for successful cytokinesis (PubMed: 15297875 , PubMed: 15625105). May play a role in mitotic chromosomal positioning and bipolar spindle stabilization (By similarity). |
| Cellular Location | Nucleus matrix. Cytoplasm. Cytoplasm, cytoskeleton, spindle Midbody Chromosome. Note=Associates with chromosomes at all stage of mitosis (PubMed:11736643, PubMed:15297875, PubMed:15625105) Chromatin localization is dependent on iron-sulfur cluster binding (PubMed:29848660). In anaphase, associates with the mitotic spindle midzone |

(PubMed:15297875). In telophase and cytokinesis, co-localizes with CIAO2B at the spindle midzone and midbody (PubMed:15297875, PubMed:29848660). Co-localizes with PRC1 in early mitosis and at the spindle midzone from anaphase B to telophase (PubMed:15297875, PubMed:15625105). Does not localize to the nucleolus (PubMed:11736643)

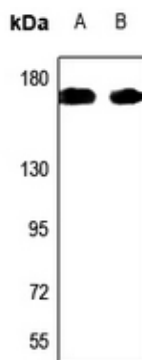
Tissue Location

Highly expressed in hematopoietic tissues, fetal liver, spleen, thymus and adult thymus and bone marrow. Lower levels are found in heart, testis, kidney, colon and lung

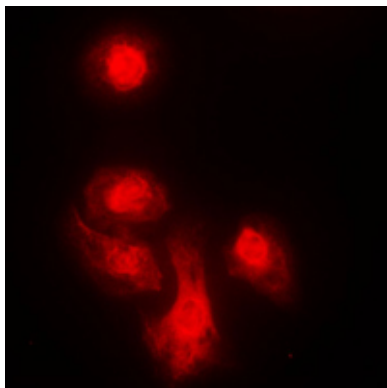
Background

KLH-conjugated synthetic peptide encompassing a sequence within the C-term region of human KIF4A. The exact sequence is proprietary.

Images



Western blot analysis of KIF4A expression in Hela (A), HGC27 (B) whole cell lysates.



Immunofluorescent analysis of KIF4A staining in MCF7 cells. Formalin-fixed cells were permeabilized with 0.1% Triton X-100 in TBS for 5-10 minutes and blocked with 3% BSA-PBS for 30 minutes at room temperature. Cells were probed with the primary antibody in 3% BSA-PBS and incubated overnight at 4 °C in a humidified chamber. Cells were washed with PBST and incubated with a DyLight 594-conjugated secondary antibody (red) in PBS at room temperature in the dark.

Please note: All products are 'FOR RESEARCH USE ONLY. NOT FOR USE IN DIAGNOSTIC OR THERAPEUTIC PROCEDURES'.