

Anti-SHCB Antibody

Rabbit polyclonal antibody to SHCB

Catalog # AP59824

Product Information

Application	WB, IP
Primary Accession	P98077
Other Accession	Q8BMC3
Reactivity	Human, Mouse, Rat, Monkey
Host	Rabbit
Clonality	Polyclonal
Calculated MW	61916

Additional Information

Gene ID	25759
Other Names	SCK; SHCB; SHC-transforming protein 2; Protein Sck; SHC-transforming protein B; Src homology 2 domain-containing-transforming protein C2; SH2 domain protein C2
Target/Specificity	Recognizes endogenous levels of SHCB protein.
Dilution	WB~~WB (1/500 - 1/1000), IP (1/10 - 1/100) IP~~N/A
Format	Liquid in 0.42% Potassium phosphate, 0.87% Sodium chloride, pH 7.3, 30% glycerol, and 0.09% (W/V) sodium azide.
Storage	Store at -20 °C.Stable for 12 months from date of receipt

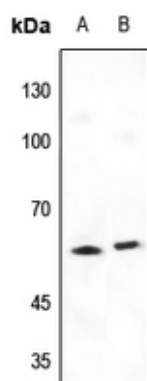
Protein Information

Name	SHC2
Synonyms	SCK, SHCB
Function	Signaling adapter that couples activated growth factor receptors to signaling pathway in neurons. Involved in the signal transduction pathways of neurotrophin-activated Trk receptors in cortical neurons (By similarity).
Tissue Location	Expressed in brain. Expressed at high level in the hypothalamus and at low level in the caudate nucleus

Background

KLH-conjugated synthetic peptide encompassing a sequence within the center region of human SHCB. The exact sequence is proprietary.

Images



Western blot analysis of SHCB expression in mouse testis (A), rat testis (B) whole cell lysates.

Please note: All products are 'FOR RESEARCH USE ONLY. NOT FOR USE IN DIAGNOSTIC OR THERAPEUTIC PROCEDURES'.