

Anti-RANBP6 Antibody

Rabbit polyclonal antibody to RANBP6

Catalog # AP59829

Product Information

Application	WB, IP, IF/IC, IHC
Primary Accession	Q60518
Other Accession	Q8BIV3
Reactivity	Human, Mouse, Rat, Monkey
Host	Rabbit
Clonality	Polyclonal
Calculated MW	124714

Additional Information

Gene ID	26953
Other Names	Ran-binding protein 6; RanBP6
Target/Specificity	Recognizes endogenous levels of RANBP6 protein.
Dilution	WB~~WB (1/500 - 1/1000), IHC (1/100 - 1/200), IF/IC (1/100 - 1/500), IP (1/10 - 1/100) IP~~N/A IF/IC~~N/A IHC~~WB (1/500 - 1/1000), IHC (1/100 - 1/200), IF/IC (1/100 - 1/500), IP (1/10 - 1/100)
Format	Liquid in 0.42% Potassium phosphate, 0.87% Sodium chloride, pH 7.3, 30% glycerol, and 0.09% (W/V) sodium azide.
Storage	Store at -20 °C.Stable for 12 months from date of receipt

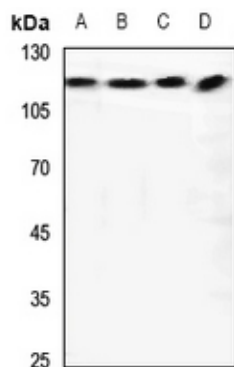
Protein Information

Name	RANBP6
Function	May function in nuclear protein import as nuclear transport receptor.
Cellular Location	Cytoplasm. Nucleus.

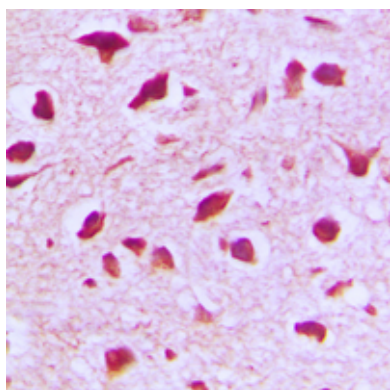
Background

KLH-conjugated synthetic peptide encompassing a sequence within the center region of human RANBP6. The exact sequence is proprietary.

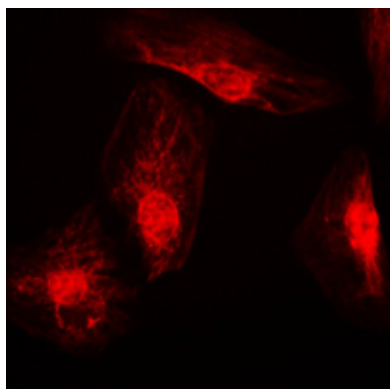
Images



Western blot analysis of RANBP6 expression in Hela (A), mouse brain (B), rat brain (C), rat testis (D) whole cell lysates.



Immunohistochemical analysis of RANBP6 staining in human brain formalin fixed paraffin embedded tissue section. The section was pre-treated using heat mediated antigen retrieval with sodium citrate buffer (pH 6.0). The section was then incubated with the antibody at room temperature and detected using an HRP conjugated compact polymer system. DAB was used as the chromogen. The section was then counterstained with haematoxylin and mounted with DPX.



Immunofluorescent analysis of RANBP6 staining in K562 cells. Formalin-fixed cells were permeabilized with 0.1% Triton X-100 in TBS for 5-10 minutes and blocked with 3% BSA-PBS for 30 minutes at room temperature. Cells were probed with the primary antibody in 3% BSA-PBS and incubated overnight at 4 °C in a humidified chamber. Cells were washed with PBST and incubated with a DyLight 594-conjugated secondary antibody (red) in PBS at room temperature in the dark.

Please note: All products are 'FOR RESEARCH USE ONLY. NOT FOR USE IN DIAGNOSTIC OR THERAPEUTIC PROCEDURES'.