

Anti-BMP10 Antibody

Rabbit polyclonal antibody to BMP10

Catalog # AP59832

Product Information

Application	WB
Primary Accession	Q95393
Other Accession	Q9R229
Reactivity	Human, Mouse, Rat
Host	Rabbit
Clonality	Polyclonal
Calculated MW	48047

Additional Information

Gene ID	27302
Other Names	Bone morphogenetic protein 10; BMP-10
Target/Specificity	KLH-conjugated synthetic peptide encompassing a sequence within the center region of human BMP10. The exact sequence is proprietary.
Dilution	WB~~WB (1/500 - 1/1000)
Format	Liquid in 0.42% Potassium phosphate, 0.87% Sodium chloride, pH 7.3, 30% glycerol, and 0.09% (W/V) sodium azide.
Storage	Store at -20 °C.Stable for 12 months from date of receipt

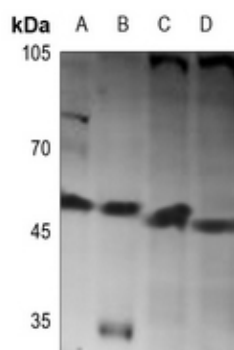
Protein Information

Name	BMP10
Function	Required for maintaining the proliferative activity of embryonic cardiomyocytes by preventing premature activation of the negative cell cycle regulator CDKN1C/p57KIP and maintaining the required expression levels of cardiogenic factors such as MEF2C and NKX2-5. Acts as a ligand for ACVRL1/ALK1, BMPR1A/ALK3 and BMPR1B/ALK6, leading to activation of SMAD1, SMAD5 and SMAD8 transcription factors. Inhibits endothelial cell migration and growth. May reduce cell migration and cell matrix adhesion in breast cancer cell lines.
Cellular Location	Secreted.
Tissue Location	Detected in mammary epithelia (at protein level).

Background

KLH-conjugated synthetic peptide encompassing a sequence within the center region of human BMP10. The exact sequence is proprietary.

Images



Western blot analysis of BMP10 expression in mouse liver (A), rat heart (B), Jurkat (C), HepG2 (D) whole cell lysates.

Please note: All products are 'FOR RESEARCH USE ONLY. NOT FOR USE IN DIAGNOSTIC OR THERAPEUTIC PROCEDURES'.