

Anti-RPL26L1 Antibody

Rabbit polyclonal antibody to RPL26L1
Catalog # AP59838

Product Information

Application	WB, IHC
Primary Accession	Q9UNX3
Reactivity	Human, Mouse, Rat
Host	Rabbit
Clonality	Polyclonal
Calculated MW	17256

Additional Information

Gene ID	51121
Other Names	RPL26P1; 60S ribosomal protein L26-like 1
Target/Specificity	KLH-conjugated synthetic peptide encompassing a sequence within the C-term region of human RPL26L1. The exact sequence is proprietary.
Dilution	WB~~WB (1/500 - 1/1000), IHC (1/100 - 1/200) IHC~~WB (1/500 - 1/1000), IHC (1/100 - 1/200)
Format	Liquid in 0.42% Potassium phosphate, 0.87% Sodium chloride, pH 7.3, 30% glycerol, and 0.09% (W/V) sodium azide.
Storage	Store at -20 °C. Stable for 12 months from date of receipt

Protein Information

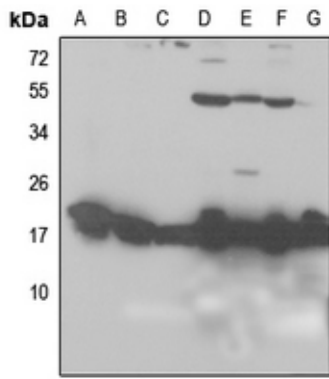
Name	RPL26L1
Synonyms	RPL26P1

Background

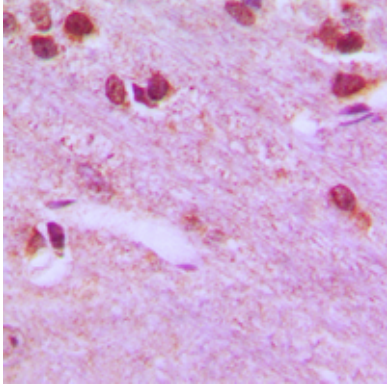
KLH-conjugated synthetic peptide encompassing a sequence within the C-term region of human RPL26L1. The exact sequence is proprietary.

Images

Western blot analysis of RPL26L1 expression in HEK293T (A), Hela (B), H1688 (C), mouse liver (D), mouse kidney (E),



rat liver (F), rat kidney (G) whole cell lysates.



Immunohistochemical analysis of RPL26L1 staining in human brain formalin fixed paraffin embedded tissue section. The section was pre-treated using heat mediated antigen retrieval with sodium citrate buffer (pH 6.0). The section was then incubated with the antibody at room temperature and detected using an HRP conjugated compact polymer system. DAB was used as the chromogen. The section was then counterstained with haematoxylin and mounted with DPX.

Please note: All products are 'FOR RESEARCH USE ONLY. NOT FOR USE IN DIAGNOSTIC OR THERAPEUTIC PROCEDURES'.