

Anti-RHCG Antibody

Rabbit polyclonal antibody to RHCG

Catalog # AP59841

Product Information

Application	WB
Primary Accession	Q9UBD6
Reactivity	Human
Host	Rabbit
Clonality	Polyclonal
Calculated MW	53179

Additional Information

Gene ID	51458
Other Names	C15orf6; CDRC2; PDRC2; RHGK; Ammonium transporter Rh type C; Rh glycoprotein kidney; Rhesus blood group family type C glycoprotein; Rh family type C glycoprotein; Rh type C glycoprotein; Tumor-related protein DRC2
Target/Specificity	KLH-conjugated synthetic peptide encompassing a sequence within the center region of human RHCG. The exact sequence is proprietary.
Dilution	WB~~WB (1/500 - 1/1000)
Format	Liquid in 0.42% Potassium phosphate, 0.87% Sodium chloride, pH 7.3, 30% glycerol, and 0.09% (W/V) sodium azide.
Storage	Store at -20 °C.Stable for 12 months from date of receipt

Protein Information

Name	RHCG
Synonyms	C15orf6, CDRC2, PDRC2, RHGK
Function	Ammonium transporter involved in the maintenance of acid-base homeostasis. Transports ammonium and its related derivative methylammonium across the plasma membrane of epithelial cells likely contributing to renal transepithelial ammonia transport and ammonia metabolism. Postulated to primarily mediate an electroneutral bidirectional transport of NH ₃ ammonia species according to a mechanism that implies interaction of an NH ₄ (+) ion with acidic residues of the pore entry followed by dissociation of NH ₄ (+) into NH ₃ and H(+). As a result NH ₃ transits through the central pore and is protonated on the extracellular side reforming NH ₄ (+) (PubMed: 11062476 , PubMed: 14761968 , PubMed: 15929723 , PubMed: 16477434 , PubMed: 16580862 , PubMed: 24077989). May act as a CO ₂

channel providing for renal acid secretion (PubMed:[24077989](#)).

Cellular Location

Cell membrane; Multi-pass membrane protein. Apical cell membrane; Multi-pass membrane protein. Note=Also detected at the basolateral membrane and in subapical vesicles.

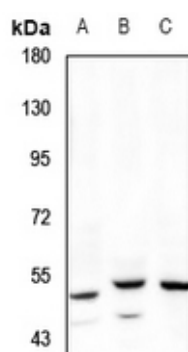
Tissue Location

Expressed in brain, testis, placenta, pancreas, esophagus and prostate. Expressed in squamous epithelial tissues (at protein level). Expressed in kidney.

Background

KLH-conjugated synthetic peptide encompassing a sequence within the center region of human RHCG. The exact sequence is proprietary.

Images



Western blot analysis of RHCG expression in A549 (A), Panc1 (B), MEF (C) whole cell lysates.

Please note: All products are 'FOR RESEARCH USE ONLY. NOT FOR USE IN DIAGNOSTIC OR THERAPEUTIC PROCEDURES'.