

Anti-NUB1 Antibody

Rabbit polyclonal antibody to NUB1

Catalog # AP59844

Product Information

Application	WB, IHC
Primary Accession	Q9Y5A7
Reactivity	Human
Host	Rabbit
Clonality	Polyclonal
Calculated MW	70538

Additional Information

Gene ID	51667
Other Names	NYREN18; NEDD8 ultimate buster 1; Negative regulator of ubiquitin-like proteins 1; Renal carcinoma antigen NY-REN-18
Target/Specificity	KLH-conjugated synthetic peptide encompassing a sequence within the C-term region of human NUB1. The exact sequence is proprietary.
Dilution	WB~~WB (1/500 - 1/1000), IHC (1/100 - 1/200) IHC~~WB (1/500 - 1/1000), IHC (1/100 - 1/200)
Format	Liquid in 0.42% Potassium phosphate, 0.87% Sodium chloride, pH 7.3, 30% glycerol, and 0.09% (W/V) sodium azide.
Storage	Store at -20 °C.Stable for 12 months from date of receipt

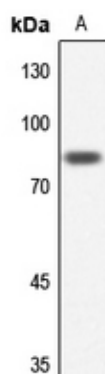
Protein Information

Name	NUB1
Synonyms	NYREN18
Function	Specific down-regulator of the NEDD8 conjugation system. Recruits NEDD8, UBD, and their conjugates to the proteasome for degradation. Isoform 1 promotes the degradation of NEDD8 more efficiently than isoform 2.
Cellular Location	Nucleus. Note=Predominantly nuclear
Tissue Location	Widely expressed with lowest expression in the pancreas for isoform 1 and in leukocytes, liver, prostate and skeletal muscle for isoform 2

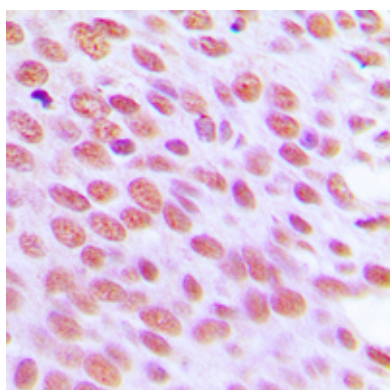
Background

KLH-conjugated synthetic peptide encompassing a sequence within the C-term region of human NUB1. The exact sequence is proprietary.

Images



Western blot analysis of NUB1 expression in HeLa (A) whole cell lysates.



Immunohistochemical analysis of NUB1 staining in human breast cancer formalin fixed paraffin embedded tissue section. The section was pre-treated using heat mediated antigen retrieval with sodium citrate buffer (pH 6.0). The section was then incubated with the antibody at room temperature and detected using an HRP conjugated compact polymer system. DAB was used as the chromogen. The section was then counterstained with haematoxylin and mounted with DPX.

Please note: All products are 'FOR RESEARCH USE ONLY. NOT FOR USE IN DIAGNOSTIC OR THERAPEUTIC PROCEDURES'.