

Anti-UBFD1 Antibody

Rabbit polyclonal antibody to UBFD1

Catalog # AP59853

Product Information

Application	WB
Primary Accession	O14562
Other Accession	Q78JW9
Reactivity	Human, Mouse, Rat, Bovine
Host	Rabbit
Clonality	Polyclonal
Calculated MW	33382

Additional Information

Gene ID	56061
Other Names	UBPH; Ubiquitin domain-containing protein UBFD1; Ubiquitin-binding protein homolog
Target/Specificity	KLH-conjugated synthetic peptide encompassing a sequence within the C-term region of human UBFD1. The exact sequence is proprietary.
Dilution	WB~~WB (1/500 - 1/1000)
Format	Liquid in 0.42% Potassium phosphate, 0.87% Sodium chloride, pH 7.3, 30% glycerol, and 0.09% (W/V) sodium azide.
Storage	Store at -20 °C.Stable for 12 months from date of receipt

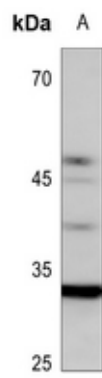
Protein Information

Name	UBFD1
Synonyms	UBPH
Function	May play a role as NF-kappa-B regulator.

Background

KLH-conjugated synthetic peptide encompassing a sequence within the C-term region of human UBFD1. The exact sequence is proprietary.

Images



Western blot analysis of UBFD1 expression in HeLa (A) whole cell lysates.

Please note: All products are 'FOR RESEARCH USE ONLY. NOT FOR USE IN DIAGNOSTIC OR THERAPEUTIC PROCEDURES'.