

Anti-NDUFA4L2 Antibody

Rabbit polyclonal antibody to NDUFA4L2

Catalog # AP59855

Product Information

Application	WB, IP
Primary Accession	Q9NRX3
Other Accession	Q4FZG9
Reactivity	Human, Mouse, Monkey, Bovine
Host	Rabbit
Clonality	Polyclonal
Calculated MW	9966

Additional Information

Gene ID	56901
Other Names	NADH dehydrogenase [ubiquinone] 1 alpha subcomplex subunit 4-like 2; NADH-ubiquinone oxidoreductase MLRQ subunit homolog; NUOMS
Target/Specificity	KLH-conjugated synthetic peptide encompassing a sequence within the C-term region of human NDUFA4L2. The exact sequence is proprietary.
Dilution	WB~~WB (1/500 - 1/1000), IP (1/10 - 1/100) IP~~N/A
Format	Liquid in 0.42% Potassium phosphate, 0.87% Sodium chloride, pH 7.3, 30% glycerol, and 0.09% (W/V) sodium azide.
Storage	Store at -20 °C. Stable for 12 months from date of receipt

Protein Information

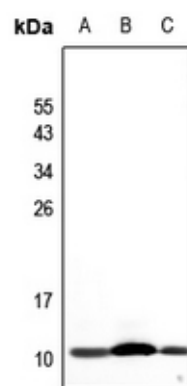
Name	NDUFA4L2
------	----------

Background

KLH-conjugated synthetic peptide encompassing a sequence within the C-term region of human NDUFA4L2. The exact sequence is proprietary.

Images

Western blot analysis of NDUFA4L2 expression in HepG2 (A), LO2 (B), HCT116 (C) whole cell lysates.



Please note: All products are 'FOR RESEARCH USE ONLY. NOT FOR USE IN DIAGNOSTIC OR THERAPEUTIC PROCEDURES'.