

Anti-ARRDC3 Antibody

Rabbit polyclonal antibody to ARRDC3

Catalog # AP59860

Product Information

Application	WB, IP, IF/IC, IHC
Primary Accession	Q96B67
Other Accession	Q7TPQ9
Reactivity	Human, Mouse, Rat, Monkey
Host	Rabbit
Clonality	Polyclonal
Calculated MW	46395

Additional Information

Gene ID	57561
Other Names	KIAA1376; Arrestin domain-containing protein 3; TBP-2-like inducible membrane protein; TLIMP
Target/Specificity	Recognizes endogenous levels of ARRDC3 protein.
Dilution	WB~~WB (1/500 - 1/1000), IHC (1/100 - 1/200), IF/IC (1/100 - 1/500), IP (1/10 - 1/100) IP~~N/A IF/IC~~N/A IHC~~WB (1/500 - 1/1000), IHC (1/100 - 1/200), IF/IC (1/100 - 1/500), IP (1/10 - 1/100)
Format	Liquid in 0.42% Potassium phosphate, 0.87% Sodium chloride, pH 7.3, 30% glycerol, and 0.09% (W/V) sodium azide.
Storage	Store at -20 °C.Stable for 12 months from date of receipt

Protein Information

Name	ARRDC3
Synonyms	KIAA1376
Function	Adapter protein that plays a role in regulating cell-surface expression of adrenergic receptors and probably also other G protein- coupled receptors (PubMed: 20559325 , PubMed: 21982743 , PubMed: 23208550). Plays a role in NEDD4-mediated ubiquitination and endocytosis af activated ADRB2 and subsequent ADRB2 degradation (PubMed: 20559325 , PubMed: 23208550). May recruit NEDD4 to ADRB2 (PubMed: 20559325). Alternatively, may function as adapter protein that does not play a major role in recruiting NEDD4 to ADRB2, but rather plays a role in a targeting ADRB2 to endosomes (PubMed: 23208550).

Cellular Location

Cytoplasm. Cell membrane; Peripheral membrane protein; Cytoplasmic side
Lysosome Endosome Early endosome. Note=Associated with plasma
membrane, as well as with endosomes and lysosomes during endocytosis
(PubMed:16269462, PubMed:20559325, PubMed:23208550)

Tissue Location

Highly expressed in skeletal muscle, placenta, kidney, lung, liver, blood,
adrenal gland, lymph node, mammary gland, thyroid, and trachea
(PubMed:16269462, PubMed:21982743). Very low levels in colon, thymus,
spleen, small intestine, bladder and bone marrow (PubMed:16269462). Strong
expression in differentiated adipocytes compared to preadipocytes
(PubMed:16269462). Detected in omental fat and subcutaneous fat tissue
(PubMed:21982743)

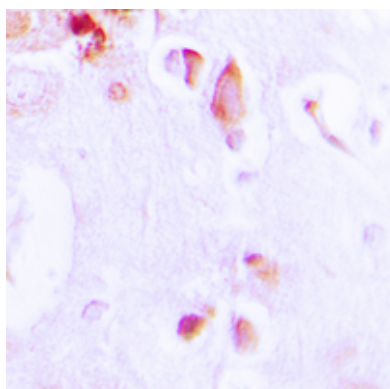
Background

KLH-conjugated synthetic peptide encompassing a sequence within the C-term region of human ARRDC3.
The exact sequence is proprietary.

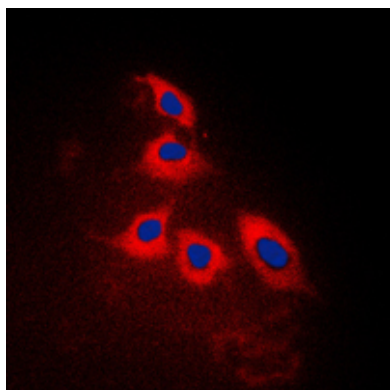
Images



Western blot analysis of ARRDC3 expression in rat liver
(A), rat muscle (B) whole cell lysates.



Immunohistochemical analysis of ARRDC3 staining in
human brain formalin fixed paraffin embedded tissue
section. The section was pre-treated using heat mediated
antigen retrieval with sodium citrate buffer (pH 6.0). The
section was then incubated with the antibody at room
temperature and detected using an HRP conjugated
compact polymer system. DAB was used as the
chromogen. The section was then counterstained with
haematoxylin and mounted with DPX.



Immunofluorescent analysis of ARRDC3 staining in Jurkat
cells. Formalin-fixed cells were permeabilized with 0.1%
Triton X-100 in TBS for 5-10 minutes and blocked with 3%
BSA-PBS for 30 minutes at room temperature. Cells were
probed with the primary antibody in 3% BSA-PBS and
incubated overnight at 4 °C in a humidified chamber.
Cells were washed with PBST and incubated with a
DyLight 594-conjugated secondary antibody (red) in PBS
at room temperature in the dark. DAPI was used to stain
the cell nuclei (blue).

Please note: All products are 'FOR RESEARCH USE ONLY. NOT FOR USE IN DIAGNOSTIC OR THERAPEUTIC PROCEDURES'.