

Anti-ZP4 Antibody

Rabbit polyclonal antibody to ZP4
Catalog # AP59862

Product Information

Application	WB
Primary Accession	Q12836
Reactivity	Human, Mouse, Rat, Monkey
Host	Rabbit
Clonality	Polyclonal
Calculated MW	59400

Additional Information

Gene ID	57829
Other Names	ZPB; Zona pellucida sperm-binding protein 4; Zona pellucida glycoprotein 4; Zp-4; Zona pellucida protein B
Target/Specificity	KLH-conjugated synthetic peptide encompassing a sequence within the center region of human ZP4. The exact sequence is proprietary.
Dilution	WB~~WB (1/500 - 1/1000)
Format	Liquid in 0.42% Potassium phosphate, 0.87% Sodium chloride, pH 7.3, 30% glycerol, and 0.09% (W/V) sodium azide.
Storage	Store at -20 °C.Stable for 12 months from date of receipt

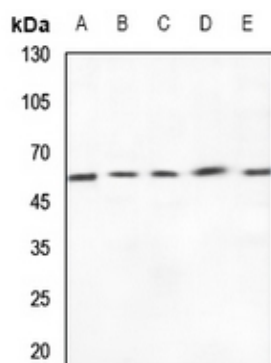
Protein Information

Name	ZP4
Synonyms	ZPB
Function	Component of the zona pellucida, an extracellular matrix surrounding oocytes which mediates sperm binding, induction of the acrosome reaction and prevents post-fertilization polyspermy. The zona pellucida is composed of 3 to 4 glycoproteins, ZP1, ZP2, ZP3, and ZP4. ZP4 may act as a sperm receptor.
Cellular Location	[Processed zona pellucida sperm-binding protein 4]: Zona pellucida {ECO:0000250 UniProtKB:Q00193}
Tissue Location	Expressed in oocytes.

Background

KLH-conjugated synthetic peptide encompassing a sequence within the center region of human ZP4. The exact sequence is proprietary.

Images



Western blot analysis of ZP4 expression in HEK293T (A), H1688 (B), mouse testis (C), mouse spleen (D), rat testis (E) whole cell lysates.

Please note: All products are 'FOR RESEARCH USE ONLY. NOT FOR USE IN DIAGNOSTIC OR THERAPEUTIC PROCEDURES'.