

# Anti-EPS8L2 Antibody

Rabbit polyclonal antibody to EPS8L2

Catalog # AP59866

## Product Information

Application	WB, IP, IF/IC, IHC
Primary Accession	<a href="#">Q9H6S3</a>
Other Accession	<a href="#">Q99K30</a>
Reactivity	Human, Mouse, Rat, Bovine
Host	Rabbit
Clonality	Polyclonal
Calculated MW	80621

## Additional Information

Gene ID	64787
Other Names	EPS8R2; Epidermal growth factor receptor kinase substrate 8-like protein 2; EPS8-like protein 2; Epidermal growth factor receptor pathway substrate 8-related protein 2; EPS8-related protein 2
Target/Specificity	KLH-conjugated synthetic peptide encompassing a sequence within the N-term region of human EPS8L2. The exact sequence is proprietary.
Dilution	WB~~WB (1/500 - 1/1000), IHC (1/100 - 1/200), IF/IC (1/100 - 1/500), IP (1/10 - 1/100) IP~~N/A IF/IC~~N/A IHC~~WB (1/500 - 1/1000), IHC (1/100 - 1/200), IF/IC (1/100 - 1/500), IP (1/10 - 1/100)
Format	Liquid in 0.42% Potassium phosphate, 0.87% Sodium chloride, pH 7.3, 30% glycerol, and 0.09% (W/V) sodium azide.
Storage	Store at -20 °C.Stable for 12 months from date of receipt

## Protein Information

Name	EPS8L2
Synonyms	EPS8R2
Function	Stimulates guanine exchange activity of SOS1. May play a role in membrane ruffling and remodeling of the actin cytoskeleton. In the cochlea, is required for stereocilia maintenance in adult hair cells (By similarity).
Cellular Location	Cytoplasm. Cell projection, stereocilium {ECO:0000250 UniProtKB:Q99K30}. Note=Localizes at the tips of the stereocilia of the inner and outer hair cells {ECO:0000250 UniProtKB:Q99K30}

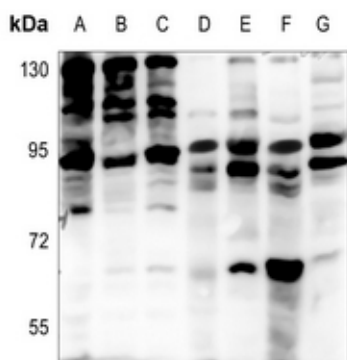
## Tissue Location

Detected in fibroblasts and placenta.

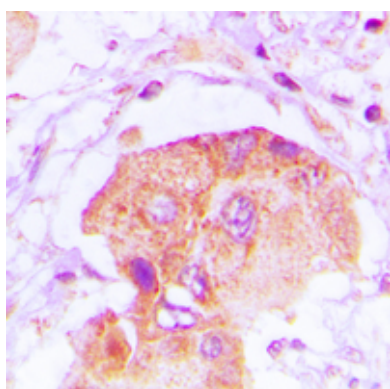
## Background

KLH-conjugated synthetic peptide encompassing a sequence within the N-term region of human EPS8L2. The exact sequence is proprietary.

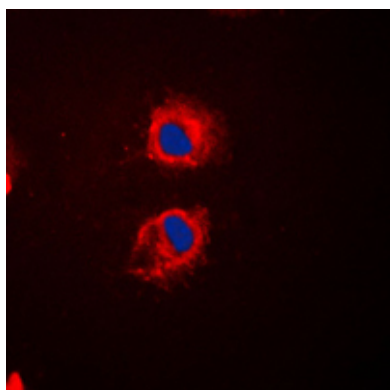
## Images



Western blot analysis of EPS8L2 expression in HEK293T (A), A549 (B), H1688 (C), mouse liver (D), mouse muscle (E), rat liver (F), rat muscle (G) whole cell lysates.



Immunohistochemical analysis of EPS8L2 staining in human lung cancer formalin fixed paraffin embedded tissue section. The section was pre-treated using heat mediated antigen retrieval with sodium citrate buffer (pH 6.0). The section was then incubated with the antibody at room temperature and detected using an HRP conjugated compact polymer system. DAB was used as the chromogen. The section was then counterstained with haematoxylin and mounted with DPX.



Immunofluorescent analysis of EPS8L2 staining in HeLa cells. Formalin-fixed cells were permeabilized with 0.1% Triton X-100 in TBS for 5-10 minutes and blocked with 3% BSA-PBS for 30 minutes at room temperature. Cells were probed with the primary antibody in 3% BSA-PBS and incubated overnight at 4 °C in a humidified chamber. Cells were washed with PBST and incubated with a DyLight 594-conjugated secondary antibody (red) in PBS at room temperature in the dark. DAPI was used to stain the cell nuclei (blue).

Please note: All products are 'FOR RESEARCH USE ONLY. NOT FOR USE IN DIAGNOSTIC OR THERAPEUTIC PROCEDURES'.