

Anti-LASS4 Antibody

Rabbit polyclonal antibody to LASS4

Catalog # AP59872

Product Information

Application	WB, IP
Primary Accession	Q9HA82
Other Accession	Q9D6J1
Reactivity	Human, Mouse, Rat, Monkey
Host	Rabbit
Clonality	Polyclonal
Calculated MW	46399

Additional Information

Gene ID	79603
Other Names	LASS4; Ceramide synthase 4; CerS4; LAG1 longevity assurance homolog 4
Target/Specificity	KLH-conjugated synthetic peptide encompassing a sequence within the center region of human LASS4. The exact sequence is proprietary.
Dilution	WB~~WB (1/500 - 1/1000), IP (1/10 - 1/100) IP~~N/A
Format	Liquid in 0.42% Potassium phosphate, 0.87% Sodium chloride, pH 7.3, 30% glycerol, and 0.09% (W/V) sodium azide.
Storage	Store at -20 °C.Stable for 12 months from date of receipt

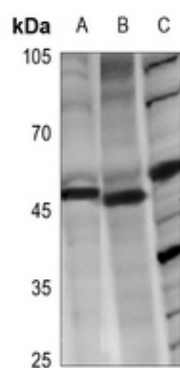
Protein Information

Name	CERS4 {ECO:0000303 PubMed:17977534, ECO:0000312 HGNC:HGNC:23747}
Function	Ceramide synthase that catalyzes formation of ceramide from sphinganine and acyl-CoA substrates, with high selectivity toward long and very-long chains (C18:0-C22:0) as acyl donor.
Cellular Location	Endoplasmic reticulum membrane {ECO:0000250 UniProtKB:Q9D6J1}; Multi-pass membrane protein

Background

KLH-conjugated synthetic peptide encompassing a sequence within the center region of human LASS4. The exact sequence is proprietary.

Images



Western blot analysis of LASS4 expression in PC3 (A), PC12 (B), AML12 (C) whole cell lysates.

Please note: All products are 'FOR RESEARCH USE ONLY. NOT FOR USE IN DIAGNOSTIC OR THERAPEUTIC PROCEDURES'.