

Anti-Rabaptin 5 beta Antibody

Rabbit polyclonal antibody to Rabaptin 5 beta
Catalog # AP59874

Product Information

| | |
|-------------------|---------------------------|
| Application | WB, IP, IHC |
| Primary Accession | Q9H5N1 |
| Reactivity | Human, Mouse, Rat, Monkey |
| Host | Rabbit |
| Clonality | Polyclonal |
| Calculated MW | 63543 |

Additional Information

| | |
|--------------------|---|
| Gene ID | 79874 |
| Other Names | RABPT5B; Rab GTPase-binding effector protein 2; Rabaptin-5beta |
| Target/Specificity | Recognizes endogenous levels of Rabaptin 5 beta protein. |
| Dilution | WB~~WB (1/500 - 1/1000), IHC (1/100 - 1/200), IP (1/10 - 1/100) IP~~N/A IHC~~WB (1/500 - 1/1000), IHC (1/100 - 1/200), IP (1/10 - 1/100) |
| Format | Liquid in 0.42% Potassium phosphate, 0.87% Sodium chloride, pH 7.3, 30% glycerol, and 0.09% (W/V) sodium azide. |
| Storage | Store at -20 °C.Stable for 12 months from date of receipt |

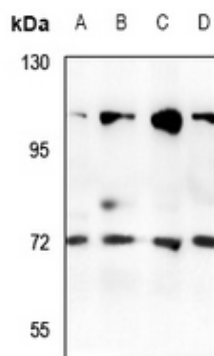
Protein Information

| | |
|-------------------|---|
| Name | RABEP2 |
| Synonyms | RABPT5B |
| Function | Plays a role in membrane trafficking and in homotypic early endosome fusion (PubMed: 9524116). Participates in arteriogenesis by regulating vascular endothelial growth factor receptor 2/VEGFR2 cell surface expression and endosomal trafficking (PubMed: 29425100). By interacting with SDCCAG8, localizes to centrosomes and plays a critical role in ciliogenesis (PubMed: 27224062). |
| Cellular Location | Cytoplasm. Early endosome. Cytoplasm, cytoskeleton, microtubule organizing center, centrosome. Cytoplasm, cytoskeleton, cilium basal body |

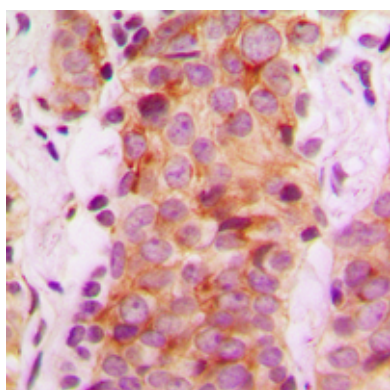
Background

KLH-conjugated synthetic peptide encompassing a sequence within the center region of human Rabaptin 5 beta. The exact sequence is proprietary.

Images



Western blot analysis of Rabaptin 5 beta expression in BV2 (A), PC12 (B), A549 (C), LOVO (D) whole cell lysates.



Immunohistochemical analysis of Rabaptin 5 beta staining in human breast cancer formalin fixed paraffin embedded tissue section. The section was pre-treated using heat mediated antigen retrieval with sodium citrate buffer (pH 6.0). The section was then incubated with the antibody at room temperature and detected using an HRP conjugated compact polymer system. DAB was used as the chromogen. The section was then counterstained with haematoxylin and mounted with DPX.

Please note: All products are 'FOR RESEARCH USE ONLY. NOT FOR USE IN DIAGNOSTIC OR THERAPEUTIC PROCEDURES'.