

# Anti-CSP Antibody

Rabbit polyclonal antibody to CSP

Catalog # AP59876

## Product Information

Application	WB, IP
Primary Accession	<a href="#">Q9H3Z4</a>
Other Accession	<a href="#">P60904</a>
Reactivity	Human, Mouse, Rat, Monkey
Host	Rabbit
Clonality	Polyclonal
Calculated MW	22149

## Additional Information

Gene ID	80331
Other Names	CSP; Dnaj homolog subfamily C member 5; Cysteine string protein; CSP
Target/Specificity	KLH-conjugated synthetic peptide encompassing a sequence within the C-term region of human CSP. The exact sequence is proprietary.
Dilution	WB~~WB (1/500 - 1/1000), IP (1/10 - 1/100) IP~~N/A
Format	Liquid in 0.42% Potassium phosphate, 0.87% Sodium chloride, pH 7.3, 30% glycerol, and 0.09% (W/V) sodium azide.
Storage	Store at -20 °C.Stable for 12 months from date of receipt

## Protein Information

Name	DNAJC5 ( <a href="#">HGNC:16235</a> )
Function	Acts as a general chaperone in regulated exocytosis (By similarity). Acts as a co-chaperone for the SNARE protein SNAP-25 (By similarity). Involved in the calcium-mediated control of a late stage of exocytosis (By similarity). May have an important role in presynaptic function. May be involved in calcium-dependent neurotransmitter release at nerve endings (By similarity).
Cellular Location	Cytoplasm, cytosol {ECO:0000250 UniProtKB:Q29455}. Membrane {ECO:0000250 UniProtKB:Q29455}; Lipid-anchor {ECO:0000250 UniProtKB:Q29455}. Cytoplasmic vesicle, secretory vesicle, chromaffin granule membrane {ECO:0000250 UniProtKB:Q29455}. Melanosome. Cell membrane. Note=The association with membranes is regulated by palmitoylation (By similarity). Identified by mass spectrometry in melanosome fractions from stage I to stage IV (PubMed:17081065). {ECO:0000250 UniProtKB:Q29455, ECO:0000269 PubMed:17081065}

**Tissue Location**

Expressed in pancreas, kidney, skeletal muscle, liver, lung, placenta, brain and heart.

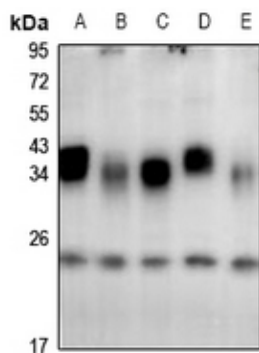
**Background**

---

KLH-conjugated synthetic peptide encompassing a sequence within the C-term region of human CSP. The exact sequence is proprietary.

**Images**

---



Western blot analysis of CSP expression in AML12 (A), PMVEC (B), A549 (C), LO2 (D), H1792 (E) whole cell lysates.

Please note: All products are 'FOR RESEARCH USE ONLY. NOT FOR USE IN DIAGNOSTIC OR THERAPEUTIC PROCEDURES'.