

# Anti-AARSD1 Antibody

Rabbit polyclonal antibody to AARSD1  
Catalog # AP59877

## Product Information

---

<b>Application</b>	WB, IP
<b>Primary Accession</b>	<a href="#">Q9BTE6</a>
<b>Other Accession</b>	<a href="#">Q3THG9</a>
<b>Reactivity</b>	Human, Mouse, Rat, Bovine
<b>Host</b>	Rabbit
<b>Clonality</b>	Polyclonal
<b>Calculated MW</b>	45480

## Additional Information

---

<b>Gene ID</b>	80755
<b>Other Names</b>	Alanyl-tRNA editing protein Aarsd1; Alanyl-tRNA synthetase domain-containing protein 1
<b>Target/Specificity</b>	KLH-conjugated synthetic peptide encompassing a sequence within the center region of human AARSD1. The exact sequence is proprietary.
<b>Dilution</b>	WB~~WB (1/500 - 1/1000), IP (1/10 - 1/100) IP~~N/A
<b>Format</b>	Liquid in 0.42% Potassium phosphate, 0.87% Sodium chloride, pH 7.3, 30% glycerol, and 0.09% (W/V) sodium azide.
<b>Storage</b>	Store at -20 °C.Stable for 12 months from date of receipt

## Protein Information

---

<b>Name</b>	AARSD1
<b>Function</b>	Functions in trans to edit the amino acid moiety from incorrectly charged tRNA(Ala).
<b>Cellular Location</b>	Cytoplasm.

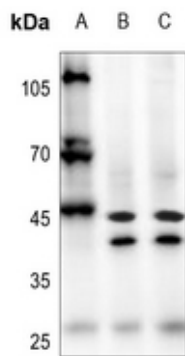
## Background

---

KLH-conjugated synthetic peptide encompassing a sequence within the center region of human AARSD1. The exact sequence is proprietary.

## Images

---



Western blot analysis of AARSD1 expression in Jurkat (A), 3T3L1 (B), PMVEC (C) whole cell lysates.

Please note: All products are 'FOR RESEARCH USE ONLY. NOT FOR USE IN DIAGNOSTIC OR THERAPEUTIC PROCEDURES'.