

Anti-ZC3H8 Antibody

Rabbit polyclonal antibody to ZC3H8

Catalog # AP59883

Product Information

Application	WB, IHC
Primary Accession	Q8N5P1
Other Accession	Q9J148
Reactivity	Human, Mouse, Rat, Monkey
Host	Rabbit
Clonality	Polyclonal
Calculated MW	33576

Additional Information

Gene ID	84524
Other Names	ZC3HDC8; Zinc finger CCCH domain-containing protein 8
Target/Specificity	Recognizes endogenous levels of ZC3H8 protein.
Dilution	WB~~WB (1/500 - 1/1000), IHC (1/100 - 1/200) IHC~~WB (1/500 - 1/1000), IHC (1/100 - 1/200)
Format	Liquid in 0.42% Potassium phosphate, 0.87% Sodium chloride, pH 7.3, 30% glycerol, and 0.09% (W/V) sodium azide.
Storage	Store at -20 °C.Stable for 12 months from date of receipt

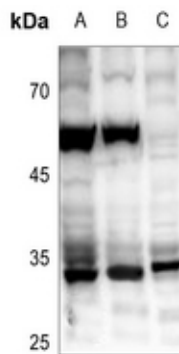
Protein Information

Name	ZC3H8
Synonyms	ZC3HDC8
Function	Acts as a transcriptional repressor of the GATA3 promoter. Sequence-specific DNA-binding factor that binds to the 5'-AGGTCTC-3' sequence within the negative cis-acting element intronic regulatory region (IRR) of the GATA3 gene (By similarity). Component of the little elongation complex (LEC), a complex required to regulate small nuclear RNA (snRNA) gene transcription by RNA polymerase II and III (PubMed: 23932780). Induces thymocyte apoptosis when overexpressed, which may indicate a role in regulation of thymocyte homeostasis.
Cellular Location	Nucleus. Note=Colocalizes with coilin in subnuclear cajal and histone locus bodies. Translocates in the LEC complex to cajal and histone locus bodies at snRNA genes in a ICE1-dependent manner. Associates to transcriptionally

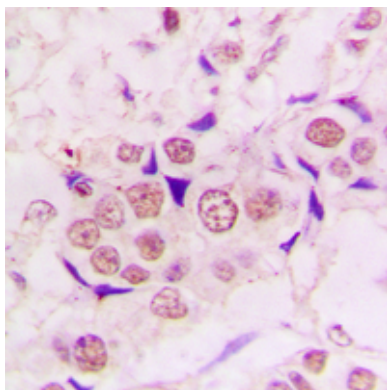
Background

KLH-conjugated synthetic peptide encompassing a sequence within the center region of human ZC3H8. The exact sequence is proprietary.

Images



Western blot analysis of ZC3H8 expression in EC9706 (A), HCT116 (B), C6 (C) whole cell lysates.



Immunohistochemical analysis of ZC3H8 staining in human lung cancer formalin fixed paraffin embedded tissue section. The section was pre-treated using heat mediated antigen retrieval with sodium citrate buffer (pH 6.0). The section was then incubated with the antibody at room temperature and detected using an HRP conjugated compact polymer system. DAB was used as the chromogen. The section was then counterstained with haematoxylin and mounted with DPX.

Please note: All products are 'FOR RESEARCH USE ONLY. NOT FOR USE IN DIAGNOSTIC OR THERAPEUTIC PROCEDURES'.