

Anti-ARMC6 Antibody

Rabbit polyclonal antibody to ARMC6

Catalog # AP59886

Product Information

Application	WB, IP, IF/IC
Primary Accession	Q6NXE6
Reactivity	Human
Host	Rabbit
Clonality	Polyclonal
Calculated MW	54142

Additional Information

Gene ID	93436
Other Names	Armadillo repeat-containing protein 6
Target/Specificity	Recognizes endogenous levels of ARMC6 protein.
Dilution	WB~~WB (1/500 - 1/1000), IF/IC (1/100 - 1/500), IP (1/10 - 1/100) IP~~N/A IF/IC~~N/A
Format	Liquid in 0.42% Potassium phosphate, 0.87% Sodium chloride, pH 7.3, 30% glycerol, and 0.09% (W/V) sodium azide.
Storage	Store at -20 °C.Stable for 12 months from date of receipt

Protein Information

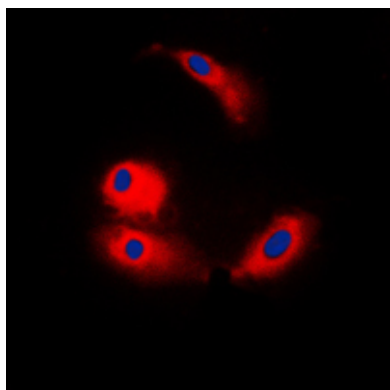
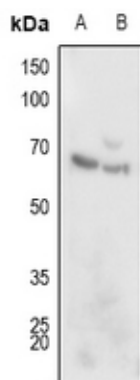
Name	ARMC6
-------------	-------

Background

KLH-conjugated synthetic peptide encompassing a sequence within the C-term region of human ARMC6. The exact sequence is proprietary.

Images

Western blot analysis of ARMC6 expression in HEK293T (A), Hela (B) whole cell lysates.



Immunofluorescent analysis of ARMC6 staining in COLO205 cells. Formalin-fixed cells were permeabilized with 0.1% Triton X-100 in TBS for 5-10 minutes and blocked with 3% BSA-PBS for 30 minutes at room temperature. Cells were probed with the primary antibody in 3% BSA-PBS and incubated overnight at 4 °C in a humidified chamber. Cells were washed with PBST and incubated with a DyLight 594-conjugated secondary antibody (red) in PBS at room temperature in the dark. DAPI was used to stain the cell nuclei (blue).

Please note: All products are 'FOR RESEARCH USE ONLY. NOT FOR USE IN DIAGNOSTIC OR THERAPEUTIC PROCEDURES'.