

# Anti-PLK5 Antibody

Rabbit polyclonal antibody to PLK5  
Catalog # AP59890

## Product Information

---

<b>Application</b>	WB, IP
<b>Primary Accession</b>	<a href="#">Q496M5</a>
<b>Reactivity</b>	Human, Rat
<b>Host</b>	Rabbit
<b>Clonality</b>	Polyclonal
<b>Calculated MW</b>	36329

## Additional Information

---

<b>Gene ID</b>	126520
<b>Other Names</b>	PLK5P; Inactive serine/threonine-protein kinase PLK5; Polo-like kinase 5; PLK-5
<b>Target/Specificity</b>	Recognizes endogenous levels of PLK5 protein.
<b>Dilution</b>	WB~~WB (1/500 - 1/1000), IP (1/10 - 1/100) IP~~N/A
<b>Format</b>	Liquid in 0.42% Potassium phosphate, 0.87% Sodium chloride, pH 7.3, 30% glycerol, and 0.09% (W/V) sodium azide.
<b>Storage</b>	Store at -20 °C. Stable for 12 months from date of receipt

## Protein Information

---

<b>Name</b>	PLK5
<b>Synonyms</b>	PLK5P
<b>Function</b>	Inactive serine/threonine-protein kinase that plays a role in cell cycle progression and neuronal differentiation.
<b>Cellular Location</b>	Nucleus, nucleolus. Cytoplasm
<b>Tissue Location</b>	Expressed in the brain, neurons and glial cells. Also expressed in highly differentiated cells, such as the serous acini in the parotid gland, distal and proximal tubules of the kidney, tubules of the seminal gland, Kupffer cells and some hepatocytes in the liver, and some cells in the germinal center of lymph nodes (at protein level).

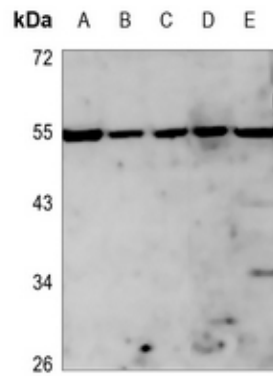
## Background

---

KLH-conjugated synthetic peptide encompassing a sequence within the center region of human PLK5. The exact sequence is proprietary.

## Images

---



Western blot analysis of PLK5 expression in HEK293T (A), H1688 (B), H446 (C), rat testis (D), rat muscle (E) whole cell lysates.

Please note: All products are 'FOR RESEARCH USE ONLY. NOT FOR USE IN DIAGNOSTIC OR THERAPEUTIC PROCEDURES'.