

# Anti-SYNE3 Antibody

Rabbit polyclonal antibody to SYNE3

Catalog # AP59899

## Product Information

---

Application	WB, IF/IC
Primary Accession	<a href="#">Q6ZMZ3</a>
Other Accession	<a href="#">Q4FZC9</a>
Reactivity	Human, Mouse, Rat
Host	Rabbit
Clonality	Polyclonal
Calculated MW	112216

## Additional Information

---

Gene ID	161176
Other Names	C14orf49; Nesprin-3; Nuclear envelope spectrin repeat protein 3
Target/Specificity	Recognizes endogenous levels of SYNE3 protein.
Dilution	WB~~WB (1/500 - 1/1000), IF/IC (1/100 - 1/500) IF/IC~~N/A
Format	Liquid in 0.42% Potassium phosphate, 0.87% Sodium chloride, pH 7.3, 30% glycerol, and 0.09% (W/V) sodium azide.
Storage	Store at -20 °C.Stable for 12 months from date of receipt

## Protein Information

---

Name	SYNE3 ( <a href="#">HGNC:19861</a> )
Function	<p>As a component of the LINC (LIinker of Nucleoskeleton and Cytoskeleton) complex involved in the connection between the nuclear lamina and the cytoskeleton. The nucleocytoplasmic interactions established by the LINC complex play an important role in the transmission of mechanical forces across the nuclear envelope and in nuclear movement and positioning. Probable anchoring protein which tethers the nucleus to the cytoskeleton by binding PLEC which can associate with the intermediate filament system. Plays a role in the regulation of aortic epithelial cell morphology, and is required for flow-induced centrosome polarization and directional migration in aortic endothelial cells.</p>
Cellular Location	<p>Nucleus outer membrane; Single-pass type IV membrane protein. Nucleus envelope. Rough endoplasmic reticulum</p> <p>Expressed in aortic endothelial cells (at protein level).</p>

## Tissue Location

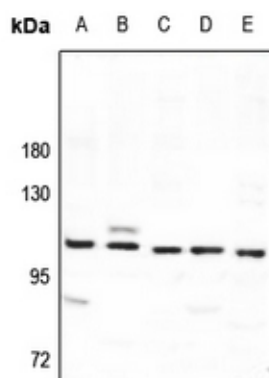
## Background

---

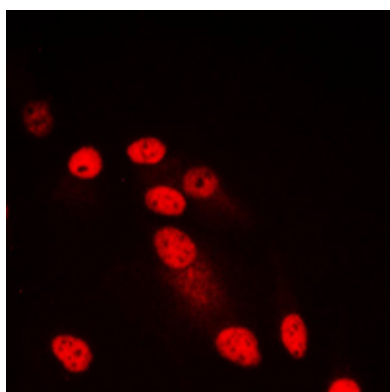
KLH-conjugated synthetic peptide encompassing a sequence within the center region of human SYNE3. The exact sequence is proprietary.

## Images

---



Western blot analysis of SYNE3 expression in AML12 (A), H9C2 (B), A549 (C), HepG2 (D), HEK293T (E) whole cell lysates.



Immunofluorescent analysis of SYNE3 staining in HepG2 cells. Formalin-fixed cells were permeabilized with 0.1% Triton X-100 in TBS for 5-10 minutes and blocked with 3% BSA-PBS for 30 minutes at room temperature. Cells were probed with the primary antibody in 3% BSA-PBS and incubated overnight at 4 °C in a humidified chamber. Cells were washed with PBST and incubated with a DyLight 594-conjugated secondary antibody (red) in PBS at room temperature in the dark.

Please note: All products are 'FOR RESEARCH USE ONLY. NOT FOR USE IN DIAGNOSTIC OR THERAPEUTIC PROCEDURES'.