

# Anti-SENP5 Antibody

Rabbit polyclonal antibody to SENP5

Catalog # AP59902

## Product Information

---

<b>Application</b>	WB, IHC
<b>Primary Accession</b>	<a href="#">Q96HI0</a>
<b>Reactivity</b>	Human, Rat, Monkey, Pig, Bovine, Drosophila
<b>Host</b>	Rabbit
<b>Clonality</b>	Polyclonal
<b>Calculated MW</b>	86693

## Additional Information

---

<b>Gene ID</b>	205564
<b>Other Names</b>	Sentrin-specific protease 5; Sentrin/SUMO-specific protease SENP5
<b>Target/Specificity</b>	KLH-conjugated synthetic peptide encompassing a sequence within the C-term region of human SENP5. The exact sequence is proprietary.
<b>Dilution</b>	WB~~WB (1/500 - 1/1000), IHC (1/100 - 1/200) IHC~~WB (1/500 - 1/1000), IHC (1/100 - 1/200)
<b>Format</b>	Liquid in 0.42% Potassium phosphate, 0.87% Sodium chloride, pH 7.3, 30% glycerol, and 0.09% (W/V) sodium azide.
<b>Storage</b>	Store at -20 °C.Stable for 12 months from date of receipt

## Protein Information

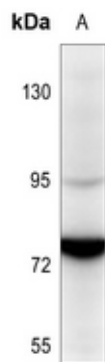
---

<b>Name</b>	SENP5
<b>Function</b>	Protease that catalyzes two essential functions in the SUMO pathway: processing of full-length SUMO3 to its mature form and deconjugation of SUMO2 and SUMO3 from targeted proteins. Has weak proteolytic activity against full-length SUMO1 or SUMO1 conjugates. Required for cell division.
<b>Cellular Location</b>	Nucleus, nucleolus

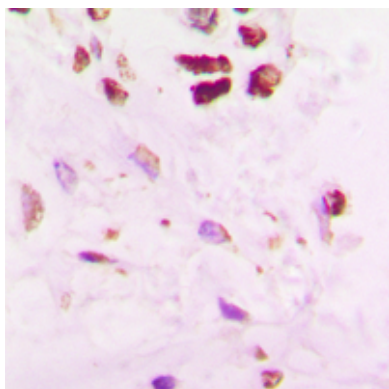
## Background

---

KLH-conjugated synthetic peptide encompassing a sequence within the C-term region of human SENP5. The exact sequence is proprietary.



Western blot analysis of SENP5 expression in Hela (A) whole cell lysates.



Immunohistochemical analysis of SENP5 staining in human lung cancer formalin fixed paraffin embedded tissue section. The section was pre-treated using heat mediated antigen retrieval with sodium citrate buffer (pH 6.0). The section was then incubated with the antibody at room temperature and detected using an HRP conjugated compact polymer system. DAB was used as the chromogen. The section was then counterstained with haematoxylin and mounted with DPX.

Please note: All products are 'FOR RESEARCH USE ONLY. NOT FOR USE IN DIAGNOSTIC OR THERAPEUTIC PROCEDURES'.