

Anti-IL-28A Antibody

Rabbit polyclonal antibody to IL-28A
Catalog # AP59903

Product Information

Application	WB
Primary Accession	Q8IZJ0
Other Accession	Q4VK74
Reactivity	Human, Mouse, Rat
Host	Rabbit
Clonality	Polyclonal
Calculated MW	22288

Additional Information

Gene ID	282616
Other Names	IL28A; ZCYTO20; Interferon lambda-2; IFN-lambda-2; Cytokine Zcyto20; Interleukin-28A; IL-28A
Target/Specificity	Recognizes endogenous levels of IL-28A protein.
Dilution	WB~~WB (1/500 - 1/1000)
Format	Liquid in 0.42% Potassium phosphate, 0.87% Sodium chloride, pH 7.3, 30% glycerol, and 0.09% (W/V) sodium azide.
Storage	Store at -20 °C.Stable for 12 months from date of receipt

Protein Information

Name	IFNL2
Synonyms	IL28A, ZCYTO20
Function	Cytokine with antiviral, antitumour and immunomodulatory activities. Plays a critical role in the antiviral host defense, predominantly in the epithelial tissues. Acts as a ligand for the heterodimeric class II cytokine receptor composed of IL10RB and IFNLR1, and receptor engagement leads to the activation of the JAK/STAT signaling pathway resulting in the expression of IFN-stimulated genes (ISG), which mediate the antiviral state. Has a restricted receptor distribution and therefore restricted targets: is primarily active in epithelial cells and this cell type-selective action is because of the epithelial cell-specific expression of its receptor IFNLR1. Seems not to be essential for early virus-activated host defense in vaginal infection, but plays an important role in Toll-like receptor (TLR)- induced antiviral defense. Plays a significant role in the antiviral immune defense in the intestinal epithelium. Exerts an

immunomodulatory effect by up-regulating MHC class I antigen expression.

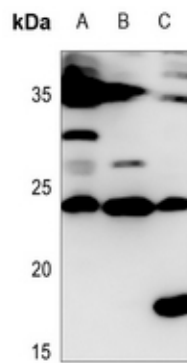
Cellular Location

Secreted.

Background

KLH-conjugated synthetic peptide encompassing a sequence within the center region of human IL-28A. The exact sequence is proprietary.

Images



Western blot analysis of IL-28A expression in mouse liver (A), rat testis (B), rat liver (C) whole cell lysates.

Please note: All products are 'FOR RESEARCH USE ONLY. NOT FOR USE IN DIAGNOSTIC OR THERAPEUTIC PROCEDURES'.