

Anti-Kappa-actin Antibody

Rabbit polyclonal antibody to Kappa-actin

Catalog # AP59907

Product Information

Application	WB, IP
Primary Accession	Q562R1
Other Accession	Q8BFZ3
Reactivity	Human, Mouse, Rat, Monkey
Host	Rabbit
Clonality	Polyclonal
Calculated MW	42003

Additional Information

Gene ID	345651
Other Names	Beta-actin-like protein 2; Kappa-actin
Target/Specificity	KLH-conjugated synthetic peptide encompassing a sequence within the center region of human Kappa-actin. The exact sequence is proprietary.
Dilution	WB~~WB (1/500 - 1/1000), IP (1/10 - 1/100) IP~~N/A
Format	Liquid in 0.42% Potassium phosphate, 0.87% Sodium chloride, pH 7.3, 30% glycerol, and 0.09% (W/V) sodium azide.
Storage	Store at -20 °C.Stable for 12 months from date of receipt

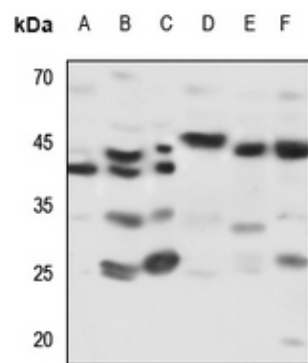
Protein Information

Name	ACTBL2
Function	Actins are highly conserved proteins that are involved in various types of cell motility and are ubiquitously expressed in all eukaryotic cells.
Cellular Location	Cytoplasm, cytoskeleton.

Background

KLH-conjugated synthetic peptide encompassing a sequence within the center region of human Kappa-actin. The exact sequence is proprietary.

Images



Western blot analysis of Kappa-actin expression in HEK293T (A), Hela (B), H460 (C), mouse muscle (D), mouse spleen (E), rat spleen (F) whole cell lysates.

Please note: All products are 'FOR RESEARCH USE ONLY. NOT FOR USE IN DIAGNOSTIC OR THERAPEUTIC PROCEDURES'.