

Anti-SERINC2 Antibody

Rabbit polyclonal antibody to SERINC2

Catalog # AP59908

Product Information

Application	WB, IHC
Primary Accession	Q96SA4
Reactivity	Human
Host	Rabbit
Clonality	Polyclonal
Calculated MW	50742

Additional Information

Gene ID	347735
Other Names	TDE2L; Serine incorporator 2; Tumor differentially expressed protein 2-like
Target/Specificity	KLH-conjugated synthetic peptide encompassing a sequence within the C-term region of human SERINC2. The exact sequence is proprietary.
Dilution	WB~~WB (1/500 - 1/1000), IHC (1/100 - 1/200) IHC~~WB (1/500 - 1/1000), IHC (1/100 - 1/200)
Format	Liquid in 0.42% Potassium phosphate, 0.87% Sodium chloride, pH 7.3, 30% glycerol, and 0.09% (W/V) sodium azide.
Storage	Store at -20 °C.Stable for 12 months from date of receipt

Protein Information

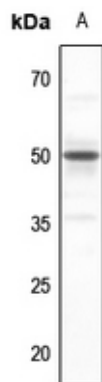
Name	SERINC2 (HGNC:23231)
Synonyms	TDE2L
Function	Non-ATP-dependent, non-specific lipid transporter for phosphatidylserine, phosphatidylcholine, and phosphatidylethanolamine. Functions as a scramblase that flips lipids in both directions across the membrane. In contrast to SERINC3 and SERINC5, has no effect on HIV- 1 particles infectivity.
Cellular Location	Cell membrane; Multi-pass membrane protein

Background

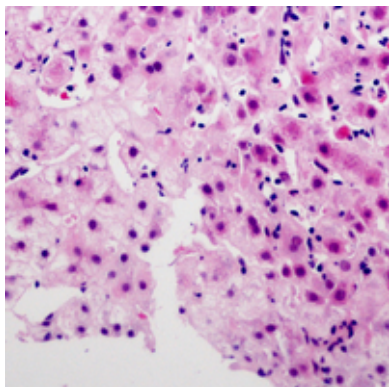
KLH-conjugated synthetic peptide encompassing a sequence within the C-term region of human SERINC2.

The exact sequence is proprietary.

Images



Western blot analysis of SERINC2 expression in HEK293T (A) whole cell lysates.



Immunohistochemical analysis of SERINC2 staining in human liver cancer formalin fixed paraffin embedded tissue section. The section was pre-treated using heat mediated antigen retrieval with sodium citrate buffer (pH 6.0). The section was then incubated with the antibody at room temperature and detected using an HRP conjugated compact polymer system. AEC was used as the chromogen. The section was then counterstained with haematoxylin and mounted with DPX.

Please note: All products are 'FOR RESEARCH USE ONLY. NOT FOR USE IN DIAGNOSTIC OR THERAPEUTIC PROCEDURES'.