

Anti-NANOGP8 Antibody

Rabbit polyclonal antibody to NANOGP8

Catalog # AP59909

Product Information

Application	WB, IP
Primary Accession	Q6NSW7
Reactivity	Human, Mouse, Rat
Host	Rabbit
Clonality	Polyclonal
Calculated MW	34673

Additional Information

Gene ID	388112
Other Names	Putative homeobox protein NANOGP8
Target/Specificity	KLH-conjugated synthetic peptide encompassing a sequence within the center region of human NANOGP8. The exact sequence is proprietary.
Dilution	WB~~WB (1/500 - 1/1000), IP (1/10 - 1/100) IP~~N/A
Format	Liquid in 0.42% Potassium phosphate, 0.87% Sodium chloride, pH 7.3, 30% glycerol, and 0.09% (W/V) sodium azide.
Storage	Store at -20 °C.Stable for 12 months from date of receipt

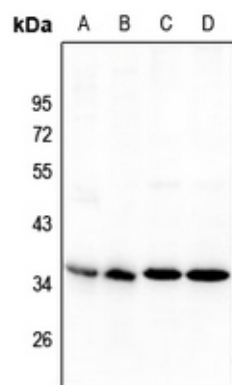
Protein Information

Name	NANOGP8
Function	May act as a transcription regulator (By similarity). When overexpressed, promotes entry of cells into S phase and cell proliferation.
Cellular Location	Nucleus {ECO:0000255 PROSITE-ProRule:PRU00108, ECO:0000269 PubMed:16623708}

Background

KLH-conjugated synthetic peptide encompassing a sequence within the center region of human NANOGP8. The exact sequence is proprietary.

Images



Western blot analysis of NANOGP8 expression in PC12 (A), SP20 (B), MCF7 (C), HepG2 (D) whole cell lysates.

Please note: All products are 'FOR RESEARCH USE ONLY. NOT FOR USE IN DIAGNOSTIC OR THERAPEUTIC PROCEDURES'.