

FKBP8 Antibody (Center)

Affinity Purified Rabbit Polyclonal Antibody (Pab)

Catalog # AP5990c

Product Information

Application	WB, E
Primary Accession	Q14318
Other Accession	Q3B7U9 , Q35465 , NP_036313.3
Reactivity	Human
Predicted	Mouse, Rat
Host	Rabbit
Clonality	Polyclonal
Isotype	Rabbit IgG
Clone Names	RB27518
Calculated MW	44562
Antigen Region	199-226

Additional Information

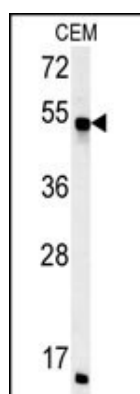
Gene ID	23770
Other Names	Peptidyl-prolyl cis-trans isomerase FKBP8, PPIase FKBP8, 38 kDa FK506-binding protein, 38 kDa FKBP, FKBP-38, hFKBP38, FK506-binding protein 8, FKBP-8, FKBP38, Rotamase, FKBP8, FKBP38
Target/Specificity	This FKBP8 antibody is generated from rabbits immunized with a KLH conjugated synthetic peptide between 199-226 amino acids from the Central region of human FKBP8.
Dilution	WB~~1:1000 E~~Use at an assay dependent concentration.
Format	Purified polyclonal antibody supplied in PBS with 0.09% (W/V) sodium azide. This antibody is purified through a protein A column, followed by peptide affinity purification.
Storage	Maintain refrigerated at 2-8°C for up to 2 weeks. For long term storage store at -20°C in small aliquots to prevent freeze-thaw cycles.
Precautions	FKBP8 Antibody (Center) is for research use only and not for use in diagnostic or therapeutic procedures.

Protein Information

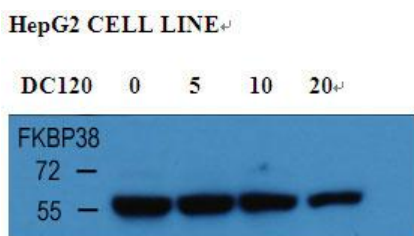
Name	FKBP8
Synonyms	FKBP38

Function	Constitutively inactive PPIase, which becomes active when bound to calmodulin and calcium. Seems to act as a chaperone for BCL2, targets it to the mitochondria and modulates its phosphorylation state. The BCL2/FKBP8/calmodulin/calcium complex probably interferes with the binding of BCL2 to its targets. The active form of FKBP8 may therefore play a role in the regulation of apoptosis. Involved in the inhibition of viral infection by influenza A viruses (IAV) (PubMed: 28169297).
Cellular Location	Mitochondrion. Mitochondrion membrane; Single-pass membrane protein; Cytoplasmic side [Isoform 3]: Mitochondrion membrane; Single-pass membrane protein; Cytoplasmic side
Tissue Location	Widely expressed. Highest levels seen in the brain. Highly abundant in the retina.

Images



FKBP8 Antibody (Center) (Cat. #AP5990c) western blot analysis in CEM cell line lysates (35ug/lane). This demonstrates the FKBP8 antibody detected the FKBP8 protein (arrow).



With HepG2 cell line lysate, the resolved proteins were electrophoretically transferred to PVDF membrane and incubated sequentially with primary antibody FKBP38 (abgent, Cat. AP5990C, 1:1000, 4°C, overnight) and horseradish peroxidase-conjugated second antibody. After washing, the bound antibody complex was detected using an ECL chemiluminescence reagent and XAR film (Kodak).

Please note: All products are 'FOR RESEARCH USE ONLY. NOT FOR USE IN DIAGNOSTIC OR THERAPEUTIC PROCEDURES'.