

# Anti-LDLRAD2 Antibody

Rabbit polyclonal antibody to LDLRAD2  
Catalog # AP59910

## Product Information

---

Application	WB, IP
Primary Accession	<a href="#">Q5SZ11</a>
Reactivity	Human, Rat
Host	Rabbit
Clonality	Polyclonal
Calculated MW	28581

## Additional Information

---

Gene ID	401944
Other Names	Low-density lipoprotein receptor class A domain-containing protein 2
Target/Specificity	Recognizes endogenous levels of LDLRAD2 protein.
Dilution	WB~~WB (1/500 - 1/1000), IP (1/10 - 1/100) IP~~N/A
Format	Liquid in 0.42% Potassium phosphate, 0.87% Sodium chloride, pH 7.3, 30% glycerol, and 0.09% (W/V) sodium azide.
Storage	Store at -20 °C.Stable for 12 months from date of receipt

## Protein Information

---

Name	LDLRAD2
Cellular Location	Membrane; Single-pass type I membrane protein.

## Background

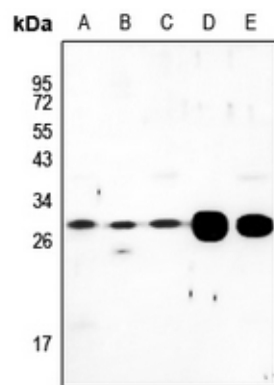
---

KLH-conjugated synthetic peptide encompassing a sequence within the center region of human LDLRAD2. The exact sequence is proprietary.

## Images

---

Western blot analysis of LDLRAD2 expression in HEK293T (A), HepG2 (B), MCF7 (C), MEF (D), C6 (E) whole cell lysates.



Please note: All products are 'FOR RESEARCH USE ONLY. NOT FOR USE IN DIAGNOSTIC OR THERAPEUTIC PROCEDURES'.