

Anti-Angiopoietin-2 Antibody

Rabbit polyclonal antibody to Angiopoietin-2

Catalog # AP59912

Product Information

Application	WB, IHC
Primary Accession	O15123
Other Accession	O35608
Reactivity	Human, Mouse, Rat, Monkey, Pig, Drosophila
Host	Rabbit
Clonality	Polyclonal
Calculated MW	56919

Additional Information

Gene ID	285
Other Names	Angiopoietin-2; ANG-2
Target/Specificity	KLH-conjugated synthetic peptide encompassing a sequence within the center region of human Angiopoietin-2. The exact sequence is proprietary.
Dilution	WB~~WB (1/500 - 1/1000), IHC (1/50 - 1/200) IHC~~WB (1/500 - 1/1000), IHC (1/50 - 1/200)
Format	Liquid in 0.42% Potassium phosphate, 0.87% Sodium chloride, pH 7.3, 30% glycerol, and 0.09% (W/V) sodium azide.
Storage	Store at -20 °C.Stable for 12 months from date of receipt

Protein Information

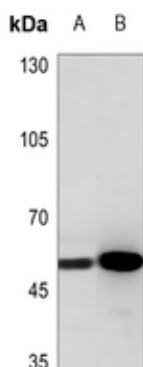
Name	ANGPT2
Function	<p>Binds to TEK/TIE2, competing for the ANGPT1 binding site, and modulating ANGPT1 signaling (PubMed:15284220, PubMed:19116766, PubMed:19223473, PubMed:9204896). Can induce tyrosine phosphorylation of TEK/TIE2 in the absence of ANGPT1 (PubMed:15284220, PubMed:19116766, PubMed:19223473, PubMed:9204896). In the absence of angiogenic inducers, such as VEGF, ANGPT2-mediated loosening of cell-matrix contacts may induce endothelial cell apoptosis with consequent vascular regression. In concert with VEGF, it may facilitate endothelial cell migration and proliferation, thus serving as a permissive angiogenic signal (PubMed:15284220, PubMed:19116766, PubMed:19223473, PubMed:9204896). Involved in the regulation of lymphangiogenesis (PubMed:32908006).</p> <p>Secreted.</p>

Cellular Location

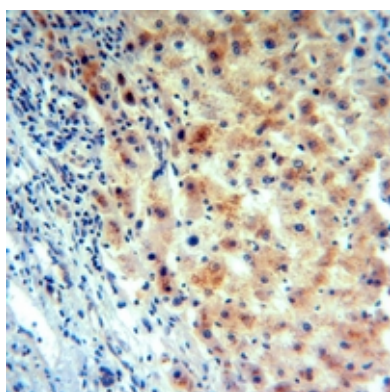
Background

KLH-conjugated synthetic peptide encompassing a sequence within the center region of human Angiopoietin-2. The exact sequence is proprietary.

Images



Western blot analysis of Angiopoietin-2 expression in mouse heart (A), mouse muscle (B) whole cell lysates.



Immunohistochemical analysis of Angiopoietin-2 staining in human liver cancer formalin fixed paraffin embedded tissue section. The section was pre-treated using heat mediated antigen retrieval with sodium citrate buffer (pH 6.0). The section was then incubated with the antibody at room temperature and detected using an HRP conjugated compact polymer system. DAB was used as the chromogen. The section was then counterstained with haematoxylin and mounted with DPX.

Please note: All products are 'FOR RESEARCH USE ONLY. NOT FOR USE IN DIAGNOSTIC OR THERAPEUTIC PROCEDURES'.