

Anti-ATM Antibody

Rabbit polyclonal antibody to ATM

Catalog # AP59915

Product Information

Application	WB
Primary Accession	Q13315
Other Accession	Q62388
Reactivity	Human, Mouse, Rat
Host	Rabbit
Clonality	Polyclonal
Calculated MW	350687

Additional Information

Gene ID	472
Other Names	ATM; Serine-protein kinase ATM; Ataxia telangiectasia mutated; A-T mutated
Target/Specificity	KLH-conjugated synthetic peptide encompassing a sequence within the center region of human ATM. The exact sequence is proprietary.
Dilution	WB~~WB (1/500 - 1/1000)
Format	Liquid in 0.42% Potassium phosphate, 0.87% Sodium chloride, pH 7.3, 30% glycerol, and 0.09% (W/V) sodium azide.
Storage	Store at -20 °C.Stable for 12 months from date of receipt

Protein Information

Name	ATM
Function	Serine/threonine protein kinase which activates checkpoint signaling upon double strand breaks (DSBs), apoptosis and genotoxic stresses such as ionizing ultraviolet A light (UVA), thereby acting as a DNA damage sensor (PubMed: 10550055 , PubMed: 10839545 , PubMed: 10910365 , PubMed: 12556884 , PubMed: 14871926 , PubMed: 15064416 , PubMed: 15448695 , PubMed: 15456891 , PubMed: 15790808 , PubMed: 15916964 , PubMed: 17923702 , PubMed: 21757780 , PubMed: 24534091 , PubMed: 35076389 , PubMed: 9733514). Recognizes the substrate consensus sequence [ST]-Q (PubMed: 10550055 , PubMed: 10839545 , PubMed: 10910365 , PubMed: 12556884 , PubMed: 14871926 , PubMed: 15448695 , PubMed: 15456891 , PubMed: 15916964 , PubMed: 17923702 , PubMed: 24534091 , PubMed: 9733514). Phosphorylates 'Ser-139' of histone variant H2AX at double strand breaks (DSBs), thereby regulating DNA damage response mechanism (By similarity). Also plays a role

in pre-B cell allelic exclusion, a process leading to expression of a single immunoglobulin heavy chain allele to enforce clonality and monospecific recognition by the B-cell antigen receptor (BCR) expressed on individual B-lymphocytes. After the introduction of DNA breaks by the RAG complex on one immunoglobulin allele, acts by mediating a repositioning of the second allele to pericentromeric heterochromatin, preventing accessibility to the RAG complex and recombination of the second allele. Also involved in signal transduction and cell cycle control. May function as a tumor suppressor. Necessary for activation of ABL1 and SAPK. Phosphorylates DYRK2, CHEK2, p53/TP53, FBXW7, FANCD2, NFKBIA, BRCA1, CREBBP/CBP, RBBP8/CTIP, FBXO46, MRE11, nibrin (NBN), RAD50, RAD17, PELI1, TERF1, UFL1, RAD9, UBQLN4 and DCLRE1C (PubMed:[10550055](#), PubMed:[10766245](#), PubMed:[10802669](#), PubMed:[10839545](#), PubMed:[10910365](#), PubMed:[10973490](#), PubMed:[11375976](#), PubMed:[12086603](#), PubMed:[15456891](#), PubMed:[19965871](#), PubMed:[21757780](#), PubMed:[24534091](#), PubMed:[26240375](#), PubMed:[26774286](#), PubMed:[30171069](#), PubMed:[30612738](#), PubMed:[30886146](#), PubMed:[30952868](#), PubMed:[38128537](#), PubMed:[9733515](#), PubMed:[9843217](#)). May play a role in vesicle and/or protein transport. Could play a role in T-cell development, gonad and neurological function. Plays a role in replication-dependent histone mRNA degradation. Binds DNA ends. Phosphorylation of DYRK2 in nucleus in response to genotoxic stress prevents its MDM2-mediated ubiquitination and subsequent proteasome degradation (PubMed:[19965871](#)). Phosphorylates ATF2 which stimulates its function in DNA damage response (PubMed:[15916964](#)). Phosphorylates ERCC6 which is essential for its chromatin remodeling activity at DNA double-strand breaks (PubMed:[29203878](#)). Phosphorylates TTC5/STRAP at 'Ser-203' in the cytoplasm in response to DNA damage, which promotes TTC5/STRAP nuclear localization (PubMed:[15448695](#)). Also involved in pexophagy by mediating phosphorylation of PEX5: translocated to peroxisomes in response to reactive oxygen species (ROS), and catalyzes phosphorylation of PEX5, promoting PEX5 ubiquitination and induction of pexophagy (PubMed:[26344566](#)).

Cellular Location

Nucleus. Cytoplasmic vesicle. Cytoplasm, cytoskeleton, microtubule organizing center, centrosome {ECO:0000250|UniProtKB:Q62388}. Peroxisome matrix. Note=Primarily nuclear (PubMed:9050866, PubMed:9150358). Found also in endocytic vesicles in association with beta-adaptin (PubMed:9707615). Translocated to peroxisomes in response to reactive oxygen species (ROS) by PEX5 (PubMed:26344566)

Tissue Location

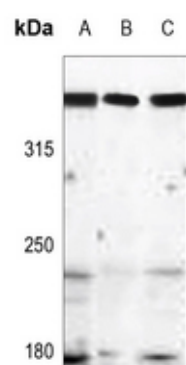
Found in pancreas, kidney, skeletal muscle, liver, lung, placenta, brain, heart, spleen, thymus, testis, ovary, small intestine, colon and leukocytes

Background

KLH-conjugated synthetic peptide encompassing a sequence within the center region of human ATM. The exact sequence is proprietary.

Images

Western blot analysis of ATM expression in BV2 (A), C6 (B), NIH3T3 (C) whole cell lysates.



Please note: All products are 'FOR RESEARCH USE ONLY. NOT FOR USE IN DIAGNOSTIC OR THERAPEUTIC PROCEDURES'.