

# Anti-GM-CSF Antibody

Rabbit polyclonal antibody to GM-CSF

Catalog # AP59922

## Product Information

---

<b>Application</b>	WB
<b>Primary Accession</b>	<a href="#">P04141</a>
<b>Other Accession</b>	<a href="#">P01587</a>
<b>Reactivity</b>	Human, Mouse, Rat
<b>Host</b>	Rabbit
<b>Clonality</b>	Polyclonal
<b>Calculated MW</b>	16295

## Additional Information

---

<b>Gene ID</b>	1437
<b>Other Names</b>	GMCSF; Granulocyte-macrophage colony-stimulating factor; GM-CSF; Colony-stimulating factor; CSF; Molgramostin; Sargramostim
<b>Target/Specificity</b>	Recognizes endogenous levels of GM-CSF protein.
<b>Dilution</b>	WB~~WB (1/500 - 1/1000)
<b>Format</b>	Liquid in 0.42% Potassium phosphate, 0.87% Sodium chloride, pH 7.3, 30% glycerol, and 0.09% (W/V) sodium azide.
<b>Storage</b>	Store at -20 °C.Stable for 12 months from date of receipt

## Protein Information

---

<b>Name</b>	CSF2
<b>Synonyms</b>	GMCSF
<b>Function</b>	Cytokine that stimulates the growth and differentiation of hematopoietic precursor cells from various lineages, including granulocytes, macrophages, eosinophils and erythrocytes.
<b>Cellular Location</b>	Secreted

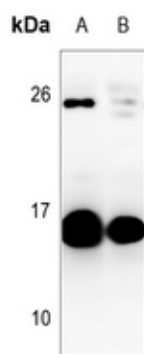
## Background

---

KLH-conjugated synthetic peptide encompassing a sequence within the C-term region of human GM-CSF. The exact sequence is proprietary.

## Images

---



Western blot analysis of GM-CSF expression in mouse muscle (A), rat muscle (B) whole cell lysates.

Please note: All products are 'FOR RESEARCH USE ONLY. NOT FOR USE IN DIAGNOSTIC OR THERAPEUTIC PROCEDURES'.