

# Anti-EPO Antibody

Rabbit polyclonal antibody to EPO

Catalog # AP59923

## Product Information

---

Application	WB
Primary Accession	<a href="#">P01588</a>
Other Accession	<a href="#">P07321</a>
Reactivity	Human, Mouse, Rat, Monkey
Host	Rabbit
Clonality	Polyclonal
Calculated MW	21307

## Additional Information

---

Gene ID	2056
Other Names	Erythropoietin; Epoetin
Target/Specificity	Recognizes endogenous levels of EPO protein.
Dilution	WB~~WB (1/500 - 1/1000)
Format	Liquid in 0.42% Potassium phosphate, 0.87% Sodium chloride, pH 7.3, 30% glycerol, and 0.09% (W/V) sodium azide.
Storage	Store at -20 °C.Stable for 12 months from date of receipt

## Protein Information

---

Name	EPO
Function	Hormone involved in the regulation of erythrocyte proliferation and differentiation and the maintenance of a physiological level of circulating erythrocyte mass (PubMed: <a href="#">28283061</a> ). Binds to EPOR leading to EPOR dimerization and JAK2 activation thereby activating specific downstream effectors, including STAT1 and STAT3 (PubMed: <a href="#">9774108</a> ).
Cellular Location	Secreted.
Tissue Location	Produced by kidney or liver of adult mammals and by liver of fetal or neonatal mammals.

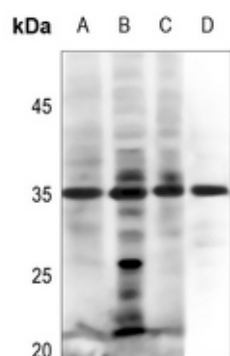
## Background

---

KLH-conjugated synthetic peptide encompassing a sequence within the center region of human EPO. The exact sequence is proprietary.

## Images

---



Western blot analysis of EPO expression in HEK293T (A), HeLa (B), A549 (C), rat liver (D) whole cell lysates.

Please note: All products are 'FOR RESEARCH USE ONLY. NOT FOR USE IN DIAGNOSTIC OR THERAPEUTIC PROCEDURES'.