

Anti-IL-2 Antibody

Rabbit polyclonal antibody to IL-2

Catalog # AP59927

Product Information

| | |
|-------------------|------------------------|
| Application | WB |
| Primary Accession | P60568 |
| Other Accession | P04351 |
| Reactivity | Human, Mouse, Rat |
| Host | Rabbit |
| Clonality | Polyclonal |
| Calculated MW | 17628 |

Additional Information

| | |
|--------------------|---|
| Gene ID | 3558 |
| Other Names | Interleukin-2; IL-2; T-cell growth factor; TCGF; Aldesleukin |
| Target/Specificity | KLH-conjugated synthetic peptide encompassing a sequence within the center region of human IL-2. The exact sequence is proprietary. |
| Dilution | WB~~WB (1/500 - 1/1000) |
| Format | Liquid in 0.42% Potassium phosphate, 0.87% Sodium chloride, pH 7.3, 30% glycerol, and 0.09% (W/V) sodium azide. |
| Storage | Store at -20 °C.Stable for 12 months from date of receipt |

Protein Information

| | |
|----------|--|
| Name | IL2 |
| Function | Cytokine produced by activated CD4-positive helper T-cells and to a lesser extend activated CD8-positive T-cells and natural killer (NK) cells that plays pivotal roles in the immune response and tolerance (PubMed: 6438535). Binds to a receptor complex composed of either the high-affinity trimeric IL-2R (IL2RA/CD25, IL2RB/CD122 and IL2RG/CD132) or the low-affinity dimeric IL-2R (IL2RB and IL2RG) (PubMed: 16293754 , PubMed: 16477002). Interaction with the receptor leads to oligomerization and conformation changes in the IL-2R subunits resulting in downstream signaling starting with phosphorylation of JAK1 and JAK3 (PubMed: 7973659). In turn, JAK1 and JAK3 phosphorylate the receptor to form a docking site leading to the phosphorylation of several substrates including STAT5 (PubMed: 8580378). This process leads to activation of several pathways including STAT, phosphoinositide-3-kinase/PI3K and mitogen-activated protein kinase/MAPK pathways (PubMed: 25142963). Functions as a T-cell growth factor and can increase |

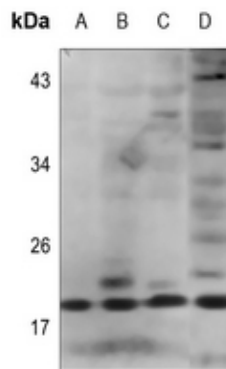
NK-cell cytolytic activity as well (PubMed:[6608729](#)). Promotes strong proliferation of activated B-cells and subsequently immunoglobulin production (PubMed:[6438535](#)). Plays a pivotal role in regulating the adaptive immune system by controlling the survival and proliferation of regulatory T-cells, which are required for the maintenance of immune tolerance. Moreover, participates in the differentiation and homeostasis of effector T-cell subsets, including Th1, Th2, Th17 as well as memory CD8-positive T-cells.

Cellular Location Secreted.

Background

KLH-conjugated synthetic peptide encompassing a sequence within the center region of human IL-2. The exact sequence is proprietary.

Images



Western blot analysis of IL-2 expression in HEK293T (A), Hela (B), H446 (C), mouse liver (D) whole cell lysates.

Please note: All products are 'FOR RESEARCH USE ONLY. NOT FOR USE IN DIAGNOSTIC OR THERAPEUTIC PROCEDURES'.