

Anti-CD181 Antibody

Rabbit polyclonal antibody to CD181
Catalog # AP59928

Product Information

Application	WB
Primary Accession	P25024
Other Accession	Q810W6
Reactivity	Human, Mouse, Rat
Host	Rabbit
Clonality	Polyclonal
Calculated MW	39791

Additional Information

Gene ID	3577
Other Names	CMKAR1; IL8RA; C-X-C chemokine receptor type 1; CXC-R1; CXCR-1; CDw128a; High affinity interleukin-8 receptor A; IL-8R A; IL-8 receptor type 1; CD181
Target/Specificity	KLH-conjugated synthetic peptide encompassing a sequence within the center region of human CD181. The exact sequence is proprietary.
Dilution	WB~~WB (1/500 - 1/1000)
Format	Liquid in 0.42% Potassium phosphate, 0.87% Sodium chloride, pH 7.3, 30% glycerol, and 0.09% (W/V) sodium azide.
Storage	Store at -20 °C.Stable for 12 months from date of receipt

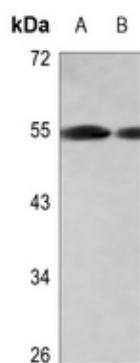
Protein Information

Name	CXCR1
Synonyms	CMKAR1, IL8RA
Function	Receptor to interleukin-8, which is a powerful neutrophils chemotactic factor (PubMed: 1840701). Binding of IL-8 to the receptor causes activation of neutrophils. This response is mediated via a G- protein that activates a phosphatidylinositol-calcium second messenger system (PubMed: 8662698).
Cellular Location	Cell membrane; Multi-pass membrane protein.

Background

KLH-conjugated synthetic peptide encompassing a sequence within the center region of human CD181. The exact sequence is proprietary.

Images



Western blot analysis of CD181 expression in HEK293T (A), A549 (B) whole cell lysates.

Please note: All products are 'FOR RESEARCH USE ONLY. NOT FOR USE IN DIAGNOSTIC OR THERAPEUTIC PROCEDURES'.