

Anti-PKLR Antibody

Rabbit polyclonal antibody to PKLR
Catalog # AP59931

Product Information

Application	WB
Primary Accession	P30613
Other Accession	P53657
Reactivity	Human, Mouse, Rat, Drosophila
Host	Rabbit
Clonality	Polyclonal
Calculated MW	61830

Additional Information

Gene ID	5313
Other Names	PK1; PKL; Pyruvate kinase PKLR; Pyruvate kinase 1; Pyruvate kinase isozymes L/R; R-type/L-type pyruvate kinase; Red cell/liver pyruvate kinase
Target/Specificity	Recognizes endogenous levels of PKLR protein.
Dilution	WB~~WB (1/500 - 1/1000)
Format	Liquid in 0.42% Potassium phosphate, 0.87% Sodium chloride, pH 7.3, 30% glycerol, and 0.09% (W/V) sodium azide.
Storage	Store at -20 °C.Stable for 12 months from date of receipt

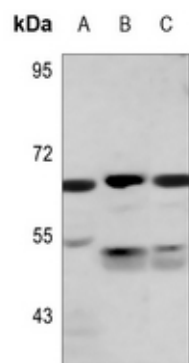
Protein Information

Name	PKLR
Synonyms	PK1, PKL
Function	Pyruvate kinase that catalyzes the conversion of phosphoenolpyruvate to pyruvate with the synthesis of ATP, and which plays a key role in glycolysis.

Background

KLH-conjugated synthetic peptide encompassing a sequence within the C-term region of human PKLR. The exact sequence is proprietary.

Images



Western blot analysis of PKLR expression in DLD (A), mouse muscle (B), rat muscle (C) whole cell lysates.

Please note: All products are 'FOR RESEARCH USE ONLY. NOT FOR USE IN DIAGNOSTIC OR THERAPEUTIC PROCEDURES'.