

Anti-NHE5 Antibody

Rabbit polyclonal antibody to NHE5

Catalog # AP59936

Product Information

Application	WB
Primary Accession	Q14940
Reactivity	Human, Mouse, Rat, Monkey, Pig, Bovine, Drosophila
Host	Rabbit
Clonality	Polyclonal
Calculated MW	99011

Additional Information

Gene ID	6553
Other Names	NHE5; Sodium/hydrogen exchanger 5; Na(+)/H(+) exchanger 5; NHE-5; Solute carrier family 9 member 5
Target/Specificity	Recognizes endogenous levels of NHE5 protein.
Dilution	WB~~WB (1/500 - 1/1000)
Format	Liquid in 0.42% Potassium phosphate, 0.87% Sodium chloride, pH 7.3, 30% glycerol, and 0.09% (W/V) sodium azide.
Storage	Store at -20 °C.Stable for 12 months from date of receipt

Protein Information

Name	SLC9A5 (HGNC:11078)
Synonyms	NHE5
Function	Plasma membrane Na(+)/H(+) antiporter. Mediates the electroneutral exchange of intracellular H(+) ions for extracellular Na(+) in 1:1 stoichiometry, thus regulating intracellular pH homeostasis, in particular in neural tissues (PubMed: 10692428 , PubMed: 19276089 , PubMed: 24936055 , PubMed: 9933641). Acts as a negative regulator of dendritic spine growth (PubMed: 21551074). Plays a role in postsynaptic remodeling and signaling (PubMed: 21551074 , PubMed: 24006492). Can also contribute to organellar pH regulation, with consequences for receptor tyrosine kinase trafficking (PubMed: 24936055).
Cellular Location	Cell membrane; Multi-pass membrane protein. Recycling endosome membrane; Multi-pass membrane protein. Cell projection, dendritic spine membrane; Multi-pass membrane protein. Synaptic cell membrane;

Multi-pass membrane protein. Cell junction, focal adhesion. Note=Cycles between recycling endosome and plasma membrane in response to diverse stimuli. Its internalization is clathrin- and beta-arrestin dependent and its plasma membrane insertion from the recycling endosomes requires phosphoinositide 3- kinase (PIK3CA) and SCAMP2.

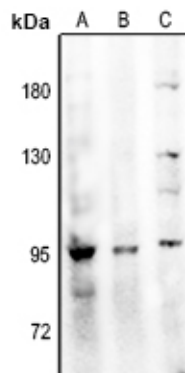
Tissue Location

Mainly expressed in brain (PubMed:7759094, PubMed:9933641). Expressed in neurons of the central and peripheral nervous system (PubMed:21551074, PubMed:9933641). Expressed also in testis, spleen, and skeletal muscle (PubMed:7759094)

Background

KLH-conjugated synthetic peptide encompassing a sequence within the center region of human NHE5. The exact sequence is proprietary.

Images



Western blot analysis of NHE5 expression in A549 (A), HEK293T (B), MEF (C) whole cell lysates.

Please note: All products are 'FOR RESEARCH USE ONLY. NOT FOR USE IN DIAGNOSTIC OR THERAPEUTIC PROCEDURES'.