

Anti-SNRPD3 Antibody

Rabbit polyclonal antibody to SNRPD3

Catalog # AP59938

Product Information

Application	WB
Primary Accession	P62318
Other Accession	P62320
Reactivity	Human, Mouse, Rat, Bovine
Host	Rabbit
Clonality	Polyclonal
Calculated MW	13916

Additional Information

Gene ID	6634
Other Names	Small nuclear ribonucleoprotein Sm D3; Sm-D3; snRNP core protein D3
Target/Specificity	Recognizes endogenous levels of SNRPD3 protein.
Dilution	WB~~WB (1/500 - 1/1000)
Format	Liquid in 0.42% Potassium phosphate, 0.87% Sodium chloride, pH 7.3, 30% glycerol, and 0.09% (W/V) sodium azide.
Storage	Store at -20 °C.Stable for 12 months from date of receipt

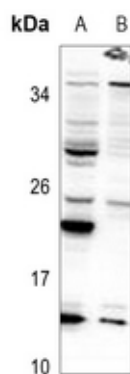
Protein Information

Name	SNRPD3
Function	Plays a role in pre-mRNA splicing as a core component of the spliceosomal U1, U2, U4 and U5 small nuclear ribonucleoproteins (snRNPs), the building blocks of the spliceosome (PubMed: 11991638 , PubMed: 18984161 , PubMed: 19325628 , PubMed: 25555158 , PubMed: 26912367 , PubMed: 28076346 , PubMed: 28502770 , PubMed: 28781166 , PubMed: 32494006). Component of both the pre-catalytic spliceosome B complex and activated spliceosome C complexes (PubMed: 11991638 , PubMed: 28076346 , PubMed: 28502770 , PubMed: 28781166). As a component of the minor spliceosome, involved in the splicing of U12-type introns in pre-mRNAs (PubMed: 15146077 , PubMed: 33509932). As part of the U7 snRNP it is involved in histone pre-mRNA 3'-end processing (By similarity).
Cellular Location	Cytoplasm, cytosol. Nucleus. Note=SMN- mediated assembly into core snRNPs occurs in the cytosol before SMN- mediated transport to the nucleus to be included in spliceosomes

Background

KLH-conjugated synthetic peptide encompassing a sequence within the center region of human SNRPD3. The exact sequence is proprietary.

Images



Western blot analysis of SNRPD3 expression in A549 (A), U87MG (B) whole cell lysates.

Please note: All products are 'FOR RESEARCH USE ONLY. NOT FOR USE IN DIAGNOSTIC OR THERAPEUTIC PROCEDURES'.