

# Anti-SPARC Antibody

Rabbit polyclonal antibody to SPARC

Catalog # AP59939

## Product Information

---

<b>Application</b>	WB, IHC
<b>Primary Accession</b>	<a href="#">P09486</a>
<b>Other Accession</b>	<a href="#">P07214</a>
<b>Reactivity</b>	Human, Mouse, Rat, Zebrafish, Bovine, SARS
<b>Host</b>	Rabbit
<b>Clonality</b>	Polyclonal
<b>Calculated MW</b>	34632

## Additional Information

---

<b>Gene ID</b>	6678
<b>Other Names</b>	ON; SPARC; Basement-membrane protein 40; BM-40; Osteonectin; ON; Secreted protein acidic and rich in cysteine
<b>Target/Specificity</b>	Recognizes endogenous levels of SPARC protein.
<b>Dilution</b>	WB~~WB (1/500 - 1/1000), IHC (1/100 - 1/200) IHC~~WB (1/500 - 1/1000), IHC (1/100 - 1/200)
<b>Format</b>	Liquid in 0.42% Potassium phosphate, 0.87% Sodium chloride, pH 7.3, 30% glycerol, and 0.09% (W/V) sodium azide.
<b>Storage</b>	Store at -20 °C.Stable for 12 months from date of receipt

## Protein Information

---

<b>Name</b>	SPARC
<b>Synonyms</b>	ON
<b>Function</b>	Appears to regulate cell growth through interactions with the extracellular matrix and cytokines. Binds calcium and copper, several types of collagen, albumin, thrombospondin, PDGF and cell membranes. There are two calcium binding sites; an acidic domain that binds 5 to 8 Ca(2+) with a low affinity and an EF-hand loop that binds a Ca(2+) ion with a high affinity.
<b>Cellular Location</b>	Secreted, extracellular space, extracellular matrix, basement membrane. Note=In or around the basement membrane

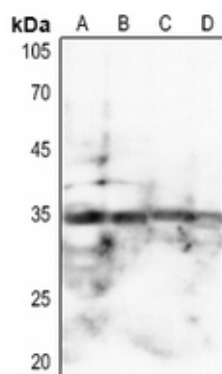
## Background

---

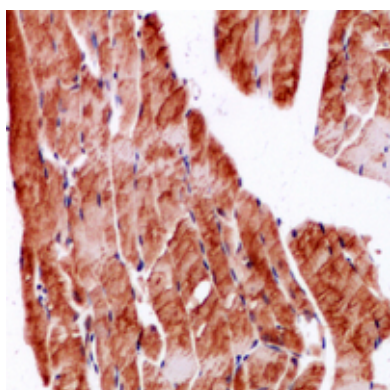
KLH-conjugated synthetic peptide encompassing a sequence within the center region of human SPARC. The exact sequence is proprietary.

## Images

---



Western blot analysis of SPARC expression in A549 (A), mouse kidney (B), mouse brain (C), rat brain (D) whole cell lysates.



Immunohistochemical analysis of SPARC staining in mouse muscle formalin fixed paraffin embedded tissue section. The section was pre-treated using heat mediated antigen retrieval with sodium citrate buffer (pH 6.0). The section was then incubated with the antibody at room temperature and detected using an HRP conjugated compact polymer system. DAB was used as the chromogen. The section was then counterstained with haematoxylin and mounted with DPX.

Please note: All products are 'FOR RESEARCH USE ONLY. NOT FOR USE IN DIAGNOSTIC OR THERAPEUTIC PROCEDURES'.