

SFN Antibody (C-term)

Affinity Purified Rabbit Polyclonal Antibody (Pab)

Catalog # AP5993b

Product Information

Application	WB, IHC-P, IF, FC, E
Primary Accession	P31947
Other Accession	NP_006133.1
Reactivity	Human
Host	Rabbit
Clonality	Polyclonal
Isotype	Rabbit IgG
Clone Names	RB27523
Calculated MW	27774
Antigen Region	222-248

Additional Information

Gene ID	2810
Other Names	14-3-3 protein sigma, Epithelial cell marker protein 1, Stratifin, SFN, HME1
Target/Specificity	This SFN antibody is generated from rabbits immunized with a KLH conjugated synthetic peptide between 222-248 amino acids from the C-terminal region of human SFN.
Dilution	WB~~1:1000 IHC-P~~1:100~500 IF~~1:10~50 FC~~1:10~50 E~~Use at an assay dependent concentration.
Format	Purified polyclonal antibody supplied in PBS with 0.05% (V/V) Proclin 300. This antibody is prepared by Saturated Ammonium Sulfate (SAS) precipitation followed by dialysis against PBS.
Storage	Maintain refrigerated at 2-8°C for up to 2 weeks. For long term storage store at -20°C in small aliquots to prevent freeze-thaw cycles.
Precautions	SFN Antibody (C-term) is for research use only and not for use in diagnostic or therapeutic procedures.

Protein Information

Name	SFN
Synonyms	HME1 {ECO:0000303 PubMed:1390337}
Function	Adapter protein implicated in the regulation of a large spectrum of both

general and specialized signaling pathways (PubMed:[15731107](#), PubMed:[22634725](#), PubMed:[28202711](#), PubMed:[37797010](#)). Binds to a large number of partners, usually by recognition of a phosphoserine or phosphothreonine motif (PubMed:[15731107](#), PubMed:[22634725](#), PubMed:[28202711](#), PubMed:[37797010](#)). Binding generally results in the modulation of the activity of the binding partner (PubMed:[15731107](#), PubMed:[22634725](#), PubMed:[28202711](#), PubMed:[37797010](#)). Promotes cytosolic retention of GBP1 GTPase by binding to phosphorylated GBP1, thereby inhibiting the innate immune response (PubMed:[37797010](#)). Also acts as a TP53/p53-regulated inhibitor of G2/M progression (PubMed:[9659898](#)). When bound to KRT17, regulates protein synthesis and epithelial cell growth by stimulating Akt/mTOR pathway (By similarity). Acts to maintain desmosome cell junction adhesion in epithelial cells via interacting with and sequestering PKP3 to the cytoplasm, thereby restricting its translocation to existing desmosome structures and therefore maintaining desmosome protein homeostasis (PubMed:[24124604](#)). Also acts to facilitate PKP3 exchange at desmosome plaques, thereby maintaining keratinocyte intercellular adhesion (PubMed:[29678907](#)). May also regulate MDM2 autoubiquitination and degradation and thereby activate p53/TP53 (PubMed:[18382127](#)).

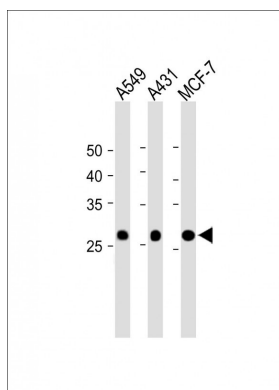
Cellular Location

Cytoplasm. Nucleus {ECO:0000250|UniProtKB:O70456} Secreted. Note=May be secreted by a non- classical secretory pathway.

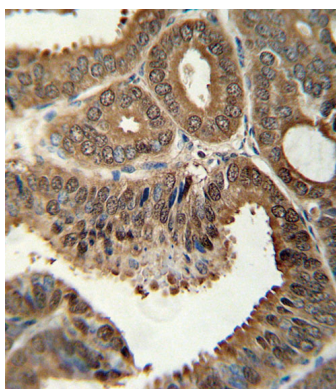
Tissue Location

Present mainly in tissues enriched in stratified squamous keratinizing epithelium.

Images

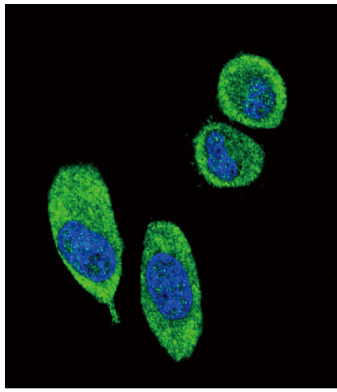


All lanes: Anti-SFN Antibody (C-term) at 1:2000 dilution
Lane 1: A549 whole cell lysate Lane 2: A431 whole cell lysate Lane 3: MCF-7 whole cell lysate Lysates/proteins at 20 µg per lane. Secondary: Goat Anti-Rabbit IgG, (H+L), Peroxidase conjugated (ASP1615) at 1/15000 dilution. Observed band size: 27 KDa Blocking/Dilution buffer: 5% NFDM/TBST.

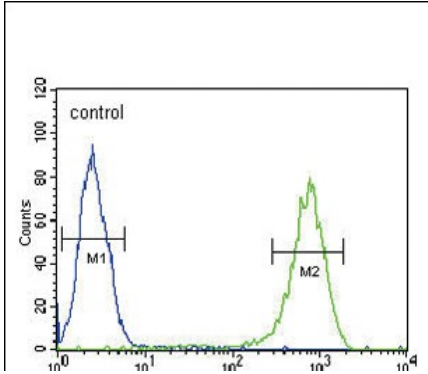


SFN antibody (C-term) (Cat. #AP5993b) immunohistochemistry analysis in formalin fixed and paraffin embedded human prostate carcinoma followed by peroxidase conjugation of the secondary antibody and DAB staining. This data demonstrates the use of the SFN antibody (C-term) for immunohistochemistry. Clinical relevance has not been evaluated.

Confocal immunofluorescent analysis of SFN Antibody (C-term)(Cat. #AP5993b) with A549 cell followed by Alexa Fluor 488-conjugated goat anti-rabbit IgG (green). DAPI



was used to stain the cell nuclear (blue).



SFN Antibody (C-term) (Cat. #AP5993b) flow cytometric analysis of Hela cells (right histogram) compared to a negative control cell (left histogram). FITC-conjugated goat-anti-rabbit secondary antibodies were used for the analysis.

Please note: All products are 'FOR RESEARCH USE ONLY. NOT FOR USE IN DIAGNOSTIC OR THERAPEUTIC PROCEDURES'.