

Anti-ZO3 Antibody

Rabbit polyclonal antibody to ZO3

Catalog # AP59948

Product Information

Application	WB
Primary Accession	Q95049
Other Accession	Q9QXY1
Reactivity	Human, Mouse, Rat, Drosophila
Host	Rabbit
Clonality	Polyclonal
Calculated MW	101397

Additional Information

Gene ID	27134
Other Names	ZO3; Tight junction protein ZO-3; Tight junction protein 3; Zona occludens protein 3; Zonula occludens protein 3
Target/Specificity	KLH-conjugated synthetic peptide encompassing a sequence within the center region of human ZO3. The exact sequence is proprietary.
Dilution	WB~~WB (1/500 - 1/1000)
Format	Liquid in 0.42% Potassium phosphate, 0.87% Sodium chloride, pH 7.3, 30% glycerol, and 0.09% (W/V) sodium azide.
Storage	Store at -20 °C.Stable for 12 months from date of receipt

Protein Information

Name	TJP3
Synonyms	ZO3
Function	<p>TJP1, TJP2, and TJP3 are closely related scaffolding proteins that link tight junction (TJ) transmembrane proteins such as claudins, junctional adhesion molecules, and occludin to the actin cytoskeleton (PubMed:16129888). The tight junction acts to limit movement of substances through the paracellular space and as a boundary between the compositionally distinct apical and basolateral plasma membrane domains of epithelial and endothelial cells. Binds and recruits PATJ to tight junctions where it connects and stabilizes apical and lateral components of tight junctions (PubMed:16129888). Promotes cell-cycle progression through the sequestration of cyclin D1 (CCND1) at tight junctions during mitosis which prevents CCND1 degradation during M- phase and enables S-phase transition (PubMed:21411630). With</p>

TJP1 and TJP2, participates in the junctional retention and stability of the transcription factor DBPA, but is not involved in its shuttling to the nucleus (By similarity). Contrary to TJP2, TJP3 is dispensable for individual viability, embryonic development, epithelial differentiation, and the establishment of TJs, at least in the laboratory environment (By similarity).

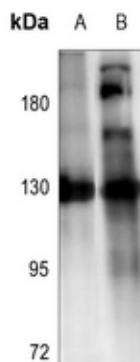
Cellular Location

Cell membrane; Peripheral membrane protein; Cytoplasmic side. Cell junction, tight junction. Nucleus. Note=Exhibits predominant nuclear expression in proliferating cells but is exclusively junctionally expressed after confluence is reached (PubMed:23608536). Shows an epithelial-specific tight junction localization in a TJP1/TJP2- dependent fashion (By similarity). {ECO:0000250|UniProtKB:Q9QXY1, ECO:0000269|PubMed:23608536}

Background

KLH-conjugated synthetic peptide encompassing a sequence within the center region of human ZO3. The exact sequence is proprietary.

Images



Western blot analysis of ZO3 expression in SGC7901 (A), mouse liver (B) whole cell lysates.

Please note: All products are 'FOR RESEARCH USE ONLY. NOT FOR USE IN DIAGNOSTIC OR THERAPEUTIC PROCEDURES'.