

Anti-RGMB Antibody

Rabbit polyclonal antibody to RGMB

Catalog # AP59957

Product Information

Application	WB
Primary Accession	Q6NW40
Other Accession	Q7TQ33
Reactivity	Human, Mouse, Rat, Monkey
Host	Rabbit
Clonality	Polyclonal
Calculated MW	47547

Additional Information

Gene ID	285704
Other Names	RGM domain family member B; DRG11-responsive axonal guidance and outgrowth of neurite; DRAGON
Target/Specificity	KLH-conjugated synthetic peptide encompassing a sequence within the center region of human RGMB. The exact sequence is proprietary.
Dilution	WB~~WB (1/500 - 1/1000)
Format	Liquid in 0.42% Potassium phosphate, 0.87% Sodium chloride, pH 7.3, 30% glycerol, and 0.09% (W/V) sodium azide.
Storage	Store at -20 °C.Stable for 12 months from date of receipt

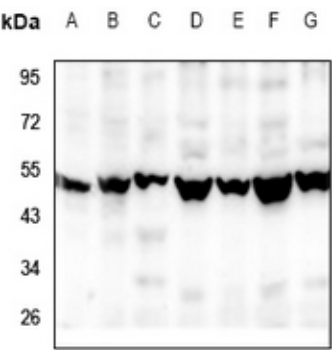
Protein Information

Name	RGMB {ECO:0000303 PubMed:19324014, ECO:0000312 HGNC:HGNC:26896}
Function	Member of the repulsive guidance molecule (RGM) family that contributes to the patterning of the developing nervous system (By similarity). Acts as a bone morphogenetic protein (BMP) coreceptor that potentiates BMP signaling (By similarity). Promotes neuronal adhesion (By similarity). May inhibit neurite outgrowth.
Cellular Location	Cell membrane {ECO:0000250 UniProtKB:Q7TQ33}; Lipid-anchor, GPI-anchor {ECO:0000250 UniProtKB:Q7TQ33}. Membrane raft {ECO:0000250 UniProtKB:Q7TQ33}

Background

KLH-conjugated synthetic peptide encompassing a sequence within the center region of human RGMB. The exact sequence is proprietary.

Images



Western blot analysis of RGMB expression in mouse brain (A), rat brain (B), Hela (C), HCT116 (D), A2780 (E), PC3 (F), SGC7901 (G) whole cell lysates.

Please note: All products are 'FOR RESEARCH USE ONLY. NOT FOR USE IN DIAGNOSTIC OR THERAPEUTIC PROCEDURES'.