

Anti-Annexin A2 (pS26) Antibody

Rabbit polyclonal antibody to Annexin A2 (pS26)

Catalog # AP59966

Product Information

Application	WB, IP
Primary Accession	P07355
Other Accession	P07356
Reactivity	Human, Mouse, Rat, Monkey, Bovine, Dog, SARS
Host	Rabbit
Clonality	Polyclonal
Calculated MW	38604

Additional Information

Gene ID	302
Other Names	ANX2; ANX2L4; CAL1H; LPC2D; Annexin A2; Annexin II; Annexin-2; Calpactin I heavy chain; Calpactin-1 heavy chain; Chromobindin-8; Lipocortin II; Placental anticoagulant protein IV; PAP-IV; Protein I; p36
Target/Specificity	Recognizes endogenous levels of Annexin A2 (pS26) protein.
Dilution	WB~~WB (1/500 - 1/1000), IP (1/10 - 1/100) IP~~N/A
Format	Liquid in 0.42% Potassium phosphate, 0.87% Sodium chloride, pH 7.3, 30% glycerol, and 0.09% (W/V) sodium azide.
Storage	Store at -20 °C.Stable for 12 months from date of receipt

Protein Information

Name	ANXA2
Synonyms	ANX2, ANX2L4, CAL1H, LPC2D
Function	Calcium-regulated membrane-binding protein whose affinity for calcium is greatly enhanced by anionic phospholipids. It binds two calcium ions with high affinity. May be involved in heat-stress response. Inhibits PCSK9-enhanced LDLR degradation, probably reduces PCSK9 protein levels via a translational mechanism but also competes with LDLR for binding with PCSK9 (PubMed: 18799458 , PubMed: 22848640 , PubMed: 24808179). Binds to endosomes damaged by phagocytosis of particulate wear debris and participates in endosomal membrane stabilization, thereby limiting NLRP3 inflammasome activation (By similarity). Required for endothelial cell surface plasmin generation and may support fibrinolytic surveillance and neoangiogenesis (By similarity).

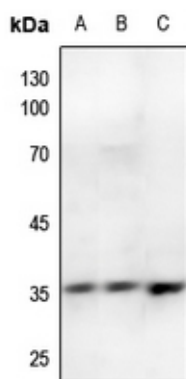
Cellular Location

Secreted, extracellular space, extracellular matrix, basement membrane. Melanosome. Note=In the lamina beneath the plasma membrane. Identified by mass spectrometry in melanosome fractions from stage I to stage IV. Translocated from the cytoplasm to the cell surface through a Golgi-independent mechanism

Background

KLH-conjugated synthetic peptide encompassing a sequence within the N-term region of human Annexin A2 (pS26). The exact sequence is proprietary.

Images



Western blot analysis of Annexin A2 (pS26) expression in mouse lung (A), rat lung (B), rat liver (C) whole cell lysates.

Please note: All products are 'FOR RESEARCH USE ONLY. NOT FOR USE IN DIAGNOSTIC OR THERAPEUTIC PROCEDURES'.