

Anti-ARF4 Antibody

Rabbit polyclonal antibody to ARF4

Catalog # AP59969

Product Information

Application	WB, IP, IHC
Primary Accession	P18085
Other Accession	P61750
Reactivity	Human, Mouse, Rat, Monkey
Host	Rabbit
Clonality	Polyclonal
Calculated MW	20511

Additional Information

Gene ID	378
Other Names	ARF2; ADP-ribosylation factor 4
Target/Specificity	KLH-conjugated synthetic peptide encompassing a sequence within the center region of human ARF4. The exact sequence is proprietary.
Dilution	WB~~WB (1/500 - 1/1000), IHC (1/100 - 1/200), IP (1/10 - 1/100) IP~~N/A IHC~~WB (1/500 - 1/1000), IHC (1/100 - 1/200), IP (1/10 - 1/100)
Format	Liquid in 0.42% Potassium phosphate, 0.87% Sodium chloride, pH 7.3, 30% glycerol, and 0.09% (W/V) sodium azide.
Storage	Store at -20 °C.Stable for 12 months from date of receipt

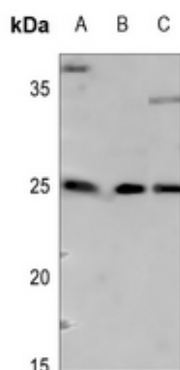
Protein Information

Name	ARF4
Synonyms	ARF2
Function	GTP-binding protein that functions as an allosteric activator of the cholera toxin catalytic subunit, an ADP-ribosyltransferase. Involved in protein trafficking; may modulate vesicle budding and uncoating within the Golgi apparatus. Part of the ciliary targeting complex containing Rab11, ASAP1, Rabin8/RAB3IP, RAB11FIP3 and ARF4, which direct preciliary vesicle trafficking to mother centriole and ciliogenesis initiation (PubMed: 25673879).
Cellular Location	Golgi apparatus. Membrane; Lipid-anchor

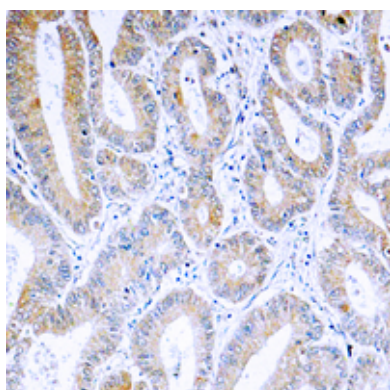
Background

KLH-conjugated synthetic peptide encompassing a sequence within the center region of human ARF4. The exact sequence is proprietary.

Images



Western blot analysis of ARF4 expression in HEK293T (A), SHSY5Y (B), mouse liver (C) whole cell lysates.



Immunohistochemical analysis of ARF4 staining in human colon cancer formalin fixed paraffin embedded tissue section. The section was pre-treated using heat mediated antigen retrieval with sodium citrate buffer (pH 6.0). The section was then incubated with the antibody at room temperature and detected using an HRP conjugated compact polymer system. DAB was used as the chromogen. The section was then counterstained with haematoxylin and mounted with DPX.

Please note: All products are 'FOR RESEARCH USE ONLY. NOT FOR USE IN DIAGNOSTIC OR THERAPEUTIC PROCEDURES'.